

FOSHAN SONLAM HARDWARE FACTORY
FUZHOU SONLAM BUILDING MATERIALS CO.,LTD

TEL: 0591-87278561

WeChat: Crystal_Sonlam

WhatsApp:0086-18050157190

Email:sonlam@sonlam.net

Factory Address: No. 7, Guixingwei Industrial Zone, Shiling Village, Shishan Town,
Nanhai District, Foshan City, Guangdong Province, China

Head Office Address: Building 1, No. 10, Jinzhou North Road, Cangshan District,
Fuzhou, Fujian, China

SONLAM

Glass Hardware Fittings

<https://www.sonlam.net>

FOSHAN SONLAM HARDWARE FACTORY
FUZHOU SONLAM BUILDING MATERIALS CO.,LTD

SONLAM GROUP LIMITED :

Established in 1999 with the history of 16 years, we are a comprehensive enterprise specializing in aluminium alloy door & hardware, stainless steel tube, handrail fitting and door hardware.

Dongguan Sonlam Door & Window Hardware Factory

Mainly produce kinds of metal door and window.

Production area is more than 3600 square meters. Possessing 17 administrative staffs, 9 salesmen, 3 advanced engineers, 5 technicians, 135 workers. Owing 19 technical patents, with annual production capacity of 130,000 square meters of door and windows.

Foshan Sonlam Stainless Steel Co.,Ltd

Mainly produce kinds of stainless steel tube.

Production area exceeds 5,300 square meters. Owing 6 administrative staffs, 6 salesmen, 2 advanced engineers, 3 technicians, 59 workers. Annual production capacity reaches 3,500 tons of stainless steel tube.

Foshan Sonlam Hardware Factory

Mainly produce various door hardware, balustrade and staircase fitting.

Production area is over 3,000 square meters. Owing 5 administrative staffs, 9 salesmen, 2 advanced engineers, 5 technicians, 77 workers. Annual production capacity reaches 3,000,000 pieces of fittings.

With long-term running, our sales net web extends over 50 countries around the world.

We win great reputation and customers' trust with outstanding quality, technique and service.

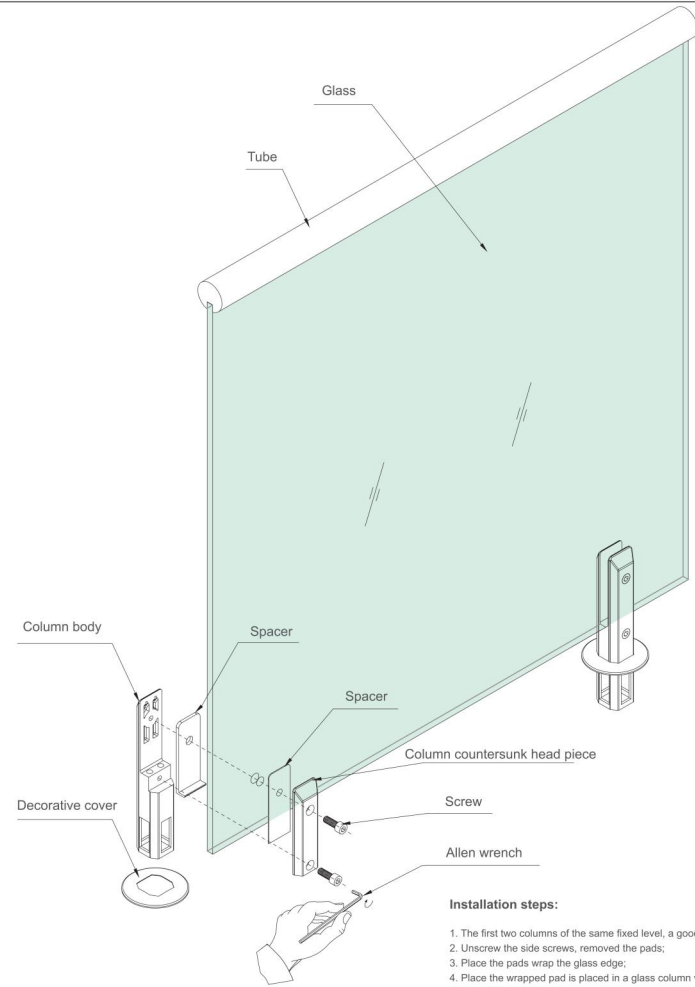
During offering products and techniques to the customers, we also pass the honor to every world corner and share all the good things with our customers.

To grow rapidly with all the customers through global cooperation.

Pass ISO:9001—2000 quality management certification

Pass French BV Authentication



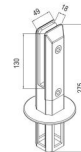


- Installation steps:**
1. The first two columns of the same fixed level, a good set of decorative cover;
 2. Unscrew the side screws, removed the pads;
 3. Place the pads wrap the glass edge;
 4. Place the wrapped pad is placed in a glass column vessel;
 5. Tighten the screws;



BJ-43

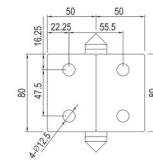
Material:SUS304/SUS316 Stainless Steel
Finish:Satin/Polish





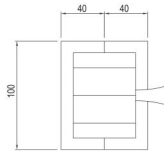
YS-33

Material: SUS304/SUS316 Stainless Steel
Finish: Satin/Polish/PVD



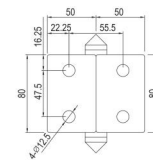
YS-34

Material: SUS304/SUS316 Stainless Steel
Finish: Satin/Polish/PVD



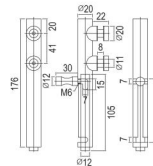
YS-35

Material: SUS304/SUS316 Stainless Steel
Finish: Satin/Polish/PVD

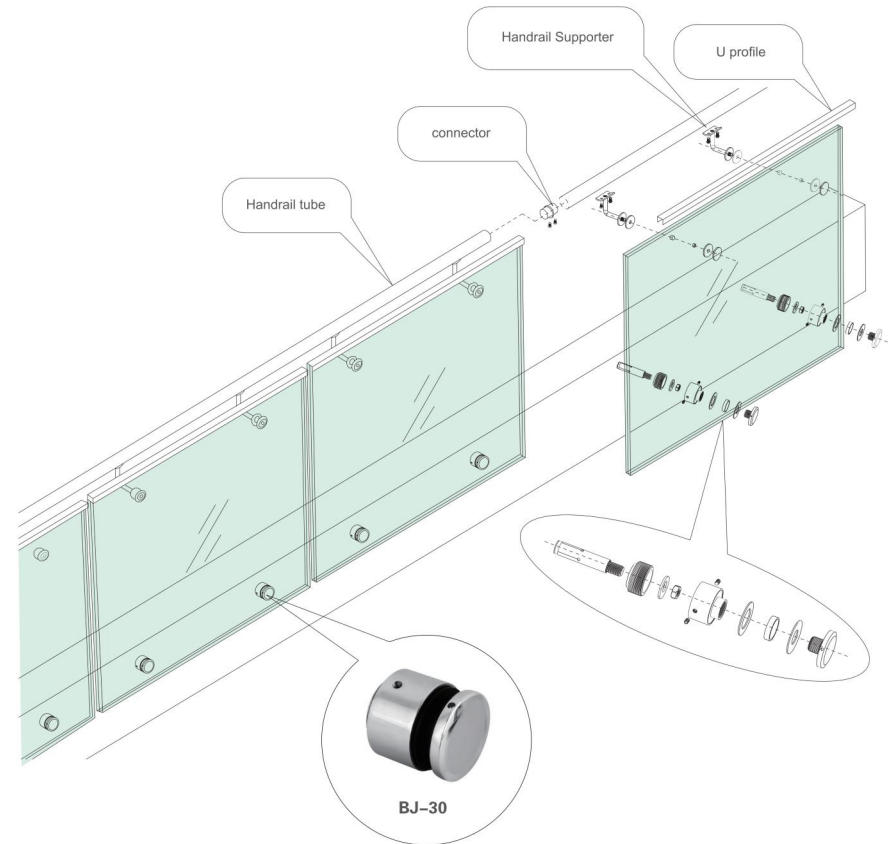


MS-176

Material: SUS304/SUS316 Stainless Steel
Finish: Satin/Polish/PVD



Installation Diagram of Glass Balustrade



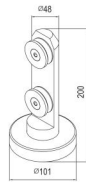
Note: The tailgate glass which carry horizontal load is nominal thickness not less than 12mm tempered glass or nominal thickness not less than 16.76MM of tempered laminated glass. When the height from the lowest point of the tailgate glass to one side floor is above 3m or 3M, 5m 5m or below that should use nominal thickness of not less than 16.76 tempered glass. When the height over 5m that shall not be used the tailgate glass to carry horizontal load. (reference JGJ 113-2009<< architectural glass application technology regulations>>

Material: SS304, SS316 ■ Finish: satin finish (S), polish finish(P)



BJ-51DG

Material:SUS304/SUS316 Stainless Steel
Finish:Satin/Polish



BJ-48

Material:SUS304/SUS316 Stainless Steel
Finish:Satin/Polish



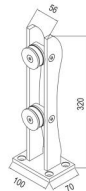
BJ-52

Material:SUS304/SUS316 Stainless Steel
Finish:Satin/Polish



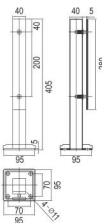
BJ-53

Material:SUS304/SUS316 Stainless Steel
Finish:Satin/Polish



LZ-4040-400

Material:SUS304/SUS316 Stainless Steel
Finish:Satin/Polish

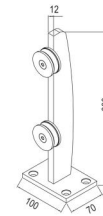


Material: SS304, SS316 ■ Finish: satin finish (S), polish finish(P)



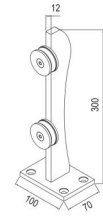
BJ-54

Material:SUS304/SUS316 Stainless Steel
Finish:Satin/Polish



BJ-56

Material:SUS304/SUS316 Stainless Steel
Finish:Satin/Polish



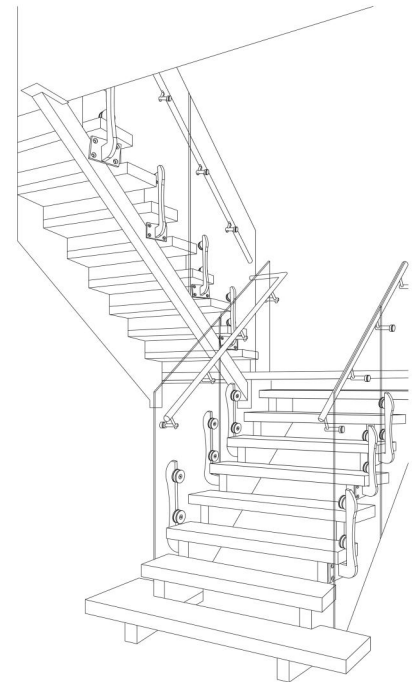
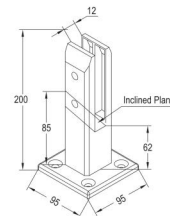
BJ-55

Material:SUS304/SUS316 Stainless Steel
Finish:Satin/Polish



BJ-59

Material:SUS304/SUS316 Stainless Steel
Finish:Satin/Polish

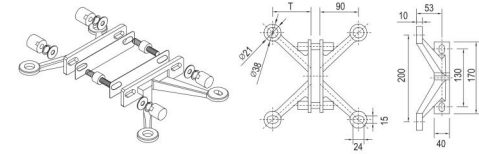




■ Material: SS304, SS316 ■ Finish: satin finish (S), polish finish(P)

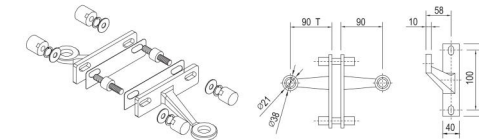
MQ-18

Material:SUS304/SUS316 Stainless Steel
Finish:Satin/Polish/PVD



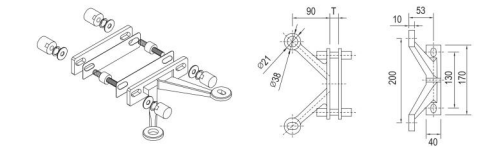
MQ-19

Material:SUS304/SUS316 Stainless Steel
Finish:Satin/Polish/PVD



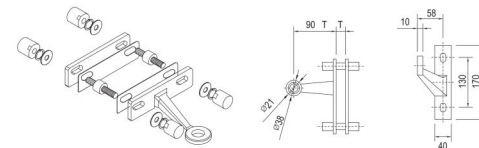
MQ-20

Material:SUS304/SUS316 Stainless Steel
Finish:Satin/Polish/PVD



MQ-21

Material:SUS304/SUS316 Stainless Steel
Finish:Satin/Polish/PVD

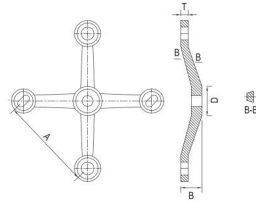


■ Material: SS304, SS316 ■ Finish: satin finish (S), polish finish(P)

MQ-01

Material:SUS304/SUS316 Stainless Steel
Finish:Satin/Polish/PVD

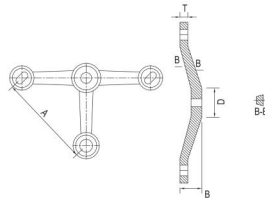
A	B	D	T
300	52	56	16
250	48	56	13.5
220	46	54	13
200	46	47	11
160	31	43	12
150	35	45	10



MQ-02

Material:SUS304/SUS316 Stainless Steel
Finish:Satin/Polish/PVD

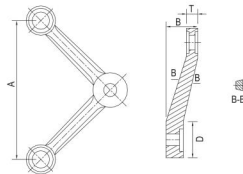
A	B	D	T
300	52	56	16
250	48	56	13.5
220	46	54	13
200	46	47	11
160	31	43	12
150	35	45	10



MQ-03

Material:SUS304/SUS316 Stainless Steel
Finish:Satin/Polish/PVD

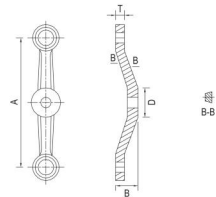
A	B	D	T
300	52	56	16
250	48	56	13.5
220	46	54	13
200	46	47	11
160	31	43	12
150	35	45	10



MQ-04

Material:SUS304/SUS316 Stainless Steel
Finish:Satin/Polish/PVD

A	B	D	T
300	52	56	16
250	48	56	13.5
220	46	54	13
200	46	47	11
160	31	43	12
150	35	45	10

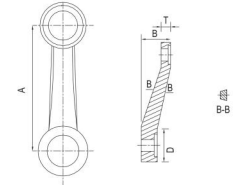


■ Material: SS304, SS316 ■ Finish: satin finish (S), polish finish(P)

MQ-05

Material:SUS304/SUS316 Stainless Steel
Finish:Satin/Polish/PVD

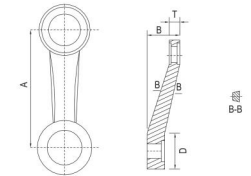
A	B	D	T
212	52	56	16
177	48	56	13.5
156	46	54	13
141	46	47	11
113	31	43	12
106	35	45	10



MQ-06

Material:SUS304/SUS316 Stainless Steel
Finish:Satin/Polish/PVD

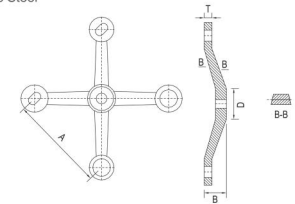
A	B	D	T
150	52	56	16
125	48	56	13.5
110	46	54	13
100	46	47	11
80	31	43	12
75	35	45	10



MQ-07

Material:SUS304/SUS316 Stainless Steel
Finish:Satin/Polish/PVD

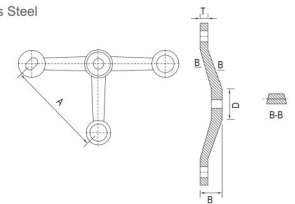
A	B	D	T
200	52	50	12



MQ-08

Material:SUS304/SUS316 Stainless Steel
Finish:Satin/Polish/PVD

A	B	D	T
200	52	50	12

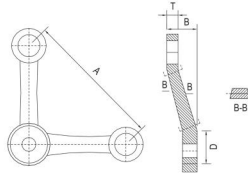


■ Material: SS304, SS316 ■ Finish: satin finish (S), polish finish(P)

MQ-09

Material:SUS304/SUS316 Stainless Steel
Finish:Satin/Polish/PVD

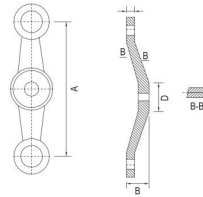
A	B	D	T
200	52	50	12



MQ-10

Material:SUS304/SUS316 Stainless Steel
Finish:Satin/Polish/PVD

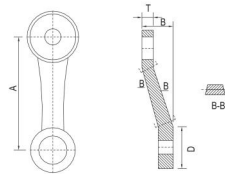
A	B	D	T
200	52	50	12



MQ-11

Material:SUS304/SUS316 Stainless Steel
Finish:Satin/Polish/PVD

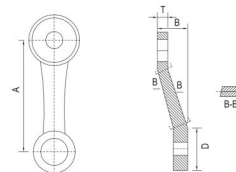
A	B	D	T
156	52	50	12



MQ-12

Material:SUS304/SUS316 Stainless Steel
Finish:Satin/Polish/PVD

A	B	D	T
100	52	50	12

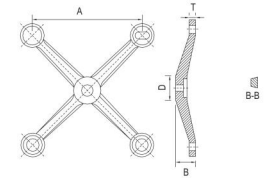


■ Material: SS304, SS316 ■ Finish: satin finish (S), polish finish(P)

MQ-17

Material:SUS304/SUS316 Stainless Steel
Finish:Satin/Polish/PVD

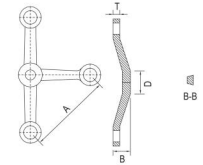
A	B	D	T
160	22	30	8
120	22	30	7
100	22	30	7



MQ-16

Material:SUS304/SUS316 Stainless Steel
Finish:Satin/Polish/PVD

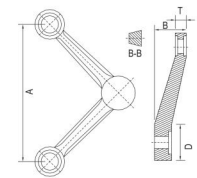
A	B	D	T
160	22	30	8
120	22	30	7
100	22	30	7



MQ-15

Material:SUS304/SUS316 Stainless Steel
Finish:Satin/Polish/PVD

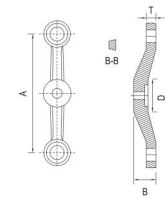
A	B	D	T
160	22	30	8
120	22	30	7
100	22	30	7



MQ-14

Material:SUS304/SUS316 Stainless Steel
Finish:Satin/Polish/PVD

A	B	D	T
160	22	30	8
120	22	30	7
100	22	30	7



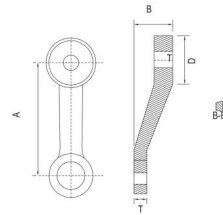
■ Material: SS304, SS316 ■ Finish: satin finish (S), polish finish(P)

MQ-13

Material:SUS304/SUS316 Stainless Steel
Finish:Satin/Polish/PVD



A	B	D	T
113	22	30	8
85	22	30	7
72	22	30	7

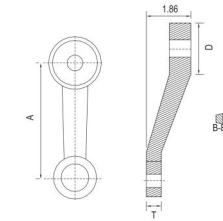


MQ-25

Material:SUS304/SUS316 Stainless Steel
Finish:Satin/Polish/PVD



A	B	D	T
80	22	30	8
60	22	30	7
50	22	30	7



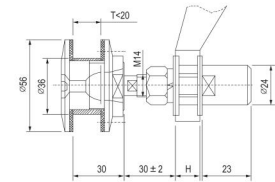
Design Load Routel				
Type	No.	Item	Recommended Bearing of Axial Swivel Joint Negative pressure	Recommended Bearing of Radial Swivel Joint Weight
Flat cape type	1	MQ-22	1000	400
	2	MQ-26	4500	2000
	3	MQ-28	2500	1200
	4	MQ-29	4500	2000
	5	MQ-30	3500	1600
Countersunk type	6	MQ-23	4500	2000
	7	MQ-27	4500	2000

Design Load of Spder			
No.	Type	Recommended Bearing of Axial Single Claw	Recommended Bearing of Radial Single Claw
1	200 Distance	2200	1100
2	220 Distance	3500	2000
3	260 Distance	4000	2000
4	300 Distance	4500	2000
5	K-Claw200 Distance	2000	1000

■ Material: SS304, SS316 ■ Finish: satin finish (S), polish finish(P)

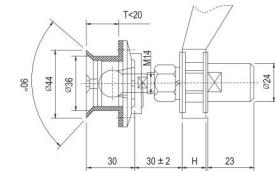
MQ-26

Material:SUS304/SUS316 Stainless Steel
Finish:Satin/Polish/PVD



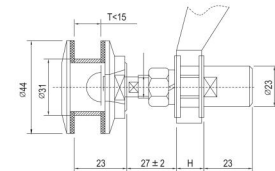
MQ-27

Material:SUS304/SUS316 Stainless Steel
Finish:Satin/Polish/PVD



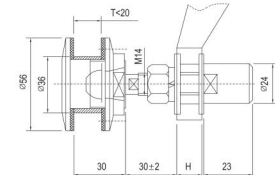
MQ-28

Material:SUS304/SUS316 Stainless Steel
Finish:Satin/Polish/PVD



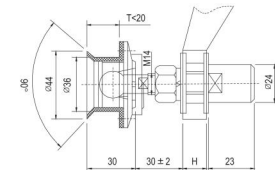
MQ-29

Material:SUS304/SUS316 Stainless Steel
Finish:Satin/Polish/PVD



MQ-23

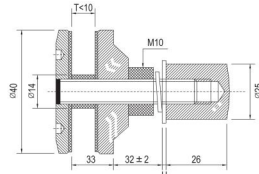
Material:SUS304/SUS316 Stainless Steel
Finish:Satin/Polish/PVD





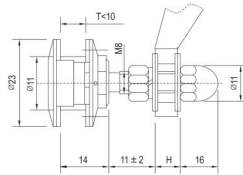
MQ-30

Material:SUS304/SUS316 Stainless Steel
Finish:Satin/Polish/PVD



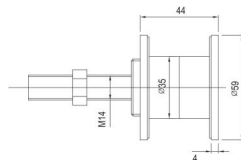
MQ-22

Material:SUS304/SUS316 Stainless Steel
Finish:Satin/Polish/PVD



MQ-411

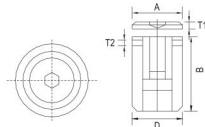
Material:SUS304/SUS316 Stainless Steel
Finish:Satin/Polish/PVD



MQ-31

Material:SUS304/SUS316 Stainless Steel
Finish:Satin/Polish/PVD

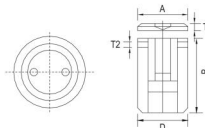
A	B	D	T1	T2
33	71	48	5	6
26	43	39	5	6



MQ-24

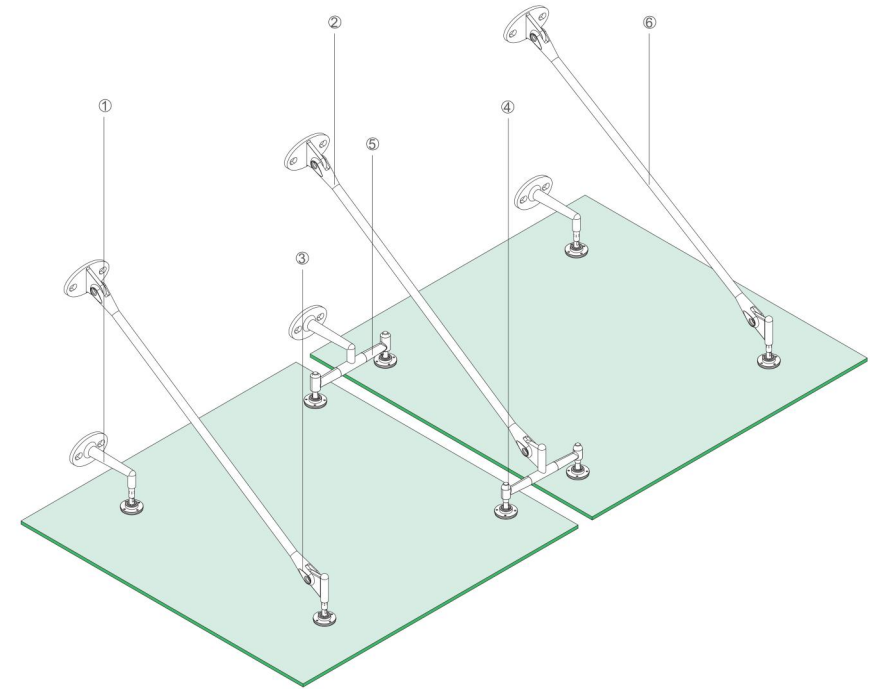
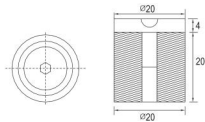
Material:SUS304/SUS316 Stainless Steel
Finish:Satin/Polish/PVD

A	B	D	T1	T2
33	71	48	5	6
26	43	39	5	6



MQ-32

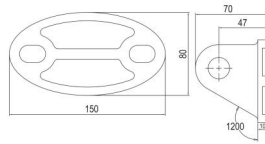
Material:SUS304/SUS316 Stainless Steel
Finish:Satin/Polish/PVD



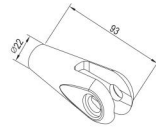
■ Material: SS304, SS316 ■ Finish: satin finish (S), polish finish(P)



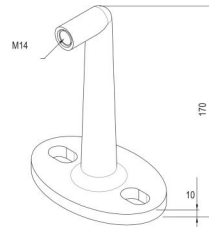
MQ-34
Material:SUS304/SUS316 Stainless Steel
Finish:Satin/Polish/PVD



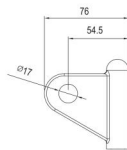
MQ-37
Material:SUS304/SUS316 Stainless Steel
Finish:Satin/Polish/PVD



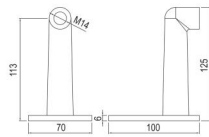
GH-35
Material:SUS304/SUS316 Stainless Steel
Finish:Satin/Polish/PVD



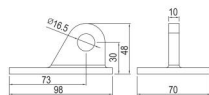
CH-36
Material:SUS304/SUS316 Stainless Steel
Finish:Satin/Polish/PVD



MQ-45
Material:SUS304/SUS316 Stainless Steel
Finish:Satin/Polish/PVD



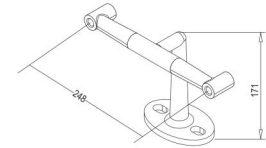
GH-34
Material:SUS304/SUS316 Stainless Steel
Finish:Satin/Polish/PVD



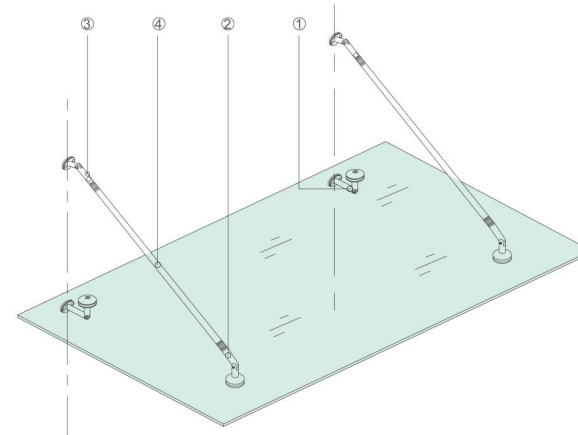
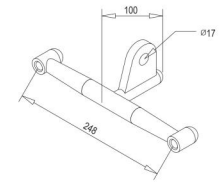
■ Material: SS304, SS316 ■ Finish: satin finish (S), polish finish(P)



MQ-41
Material:SUS304/SUS316 Stainless Steel
Finish:Satin/Polish/PVD



MQ-42
Material:SUS304/SUS316 Stainless Steel
Finish:Satin/Polish/PVD



①



②



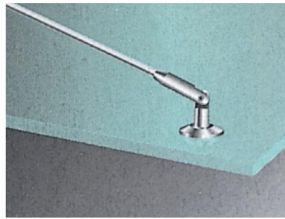
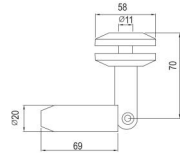
③

■ Material: SS304, SS316 ■ Finish: satin finish (S), polish finish(P)



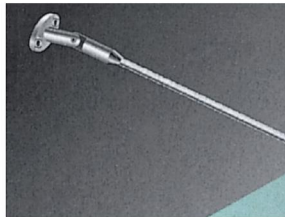
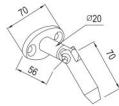
GH-16

Material:SUS304/SUS316 Stainless Steel
Finish:Satin/Polish/PVD



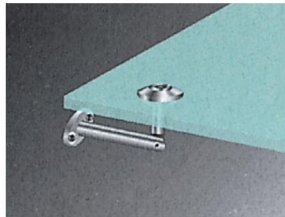
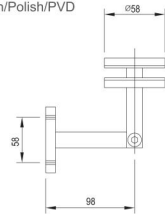
GH-10

Material:SUS304/SUS316 Stainless Steel
Finish:Satin/Polish/PVD



GH-64

Material:SUS304/SUS316 Stainless Steel
Finish:Satin/Polish/PVD



Allowable Load Glass Suspension Clamp

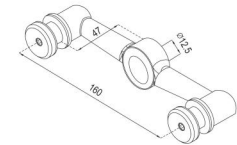
No.	Item	Allowable load
1	MQ-33	4000
2	MQ-34	4000

■ Material: SS304, SS316 ■ Finish: satin finish (S), polish finish(P)



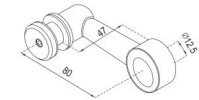
LTZ-01

Material:SUS304/SUS316 Stainless Steel
Finish:Satin/Polish/PVD



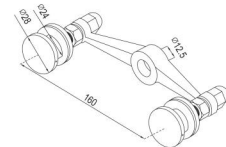
LTZ-02

Material:SUS304/SUS316 Stainless Steel
Finish:Satin/Polish/PVD

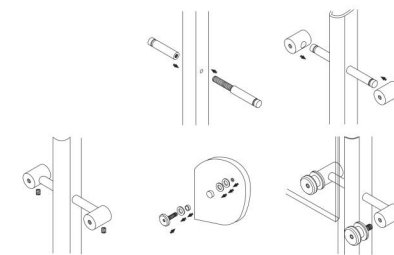
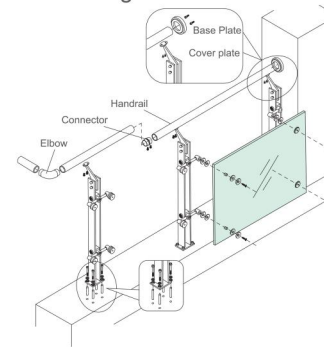


LTZ-03

Material:SUS304/SUS316 Stainless Steel
Finish:Satin/Polish/PVD



Installation Diagram

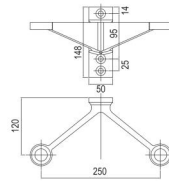


■ Material: SS304, SS316 ■ Finish: satin finish (S), polish finish(P)



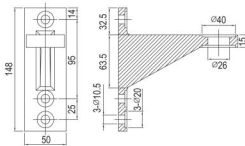
MQ-835

Material:SUS304/SUS316 Stainless Steel
Finish:Satin/Polish/PVD



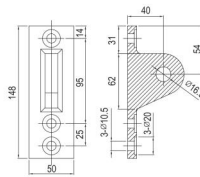
MQ-834

Material:SUS304/SUS316 Stainless Steel
Finish:Satin/Polish/PVD



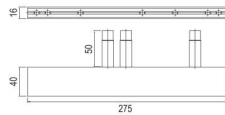
MQ-837

Material:SUS304/SUS316 Stainless Steel
Finish:Satin/Polish/PVD



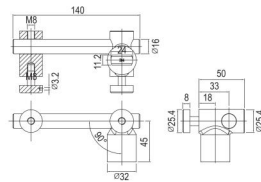
MQ-836

Material:SUS304/SUS316 Stainless Steel
Finish:Satin/Polish/PVD



ZH-79-25

Material:SUS304/SUS316 Stainless Steel
Finish:Satin/Polish/PVD

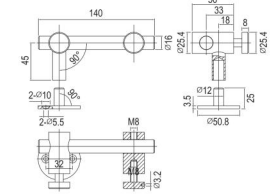


■ Material: SS304, SS316 ■ Finish: satin finish (S), polish finish(P)



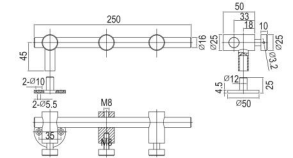
ZH-76-25

Material:SUS304/SUS316 Stainless Steel
Finish:Satin/Polish/PVD



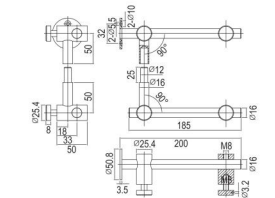
ZH-88-25

Material:SUS304/SUS316 Stainless Steel
Finish:Satin/Polish/PVD



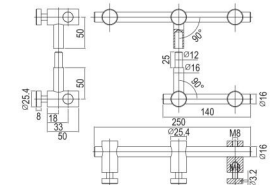
ZH-73-25

Material:SUS304/SUS316 Stainless Steel
Finish:Satin/Polish/PVD



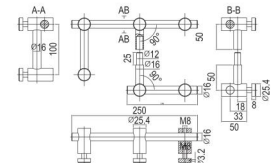
ZH-74-25

Material:SUS304/SUS316 Stainless Steel
Finish:Satin/Polish/PVD



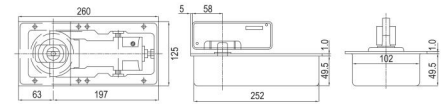
ZH-75-25

Material:SUS304/SUS316 Stainless Steel
Finish:Satin/Polish/PVD



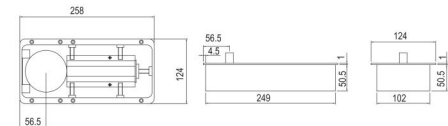
The main components, all with CR-MO steel after forging, quenching and tempering and quenching, after grinding, hydraulic parts all immersed in the high-quality low temperature resistance.

■ Material: SS304, SS316 ■ Finish: satin finish (S), polish finish(P)



DT-01-25250

MODEL	APPLICATION	DOOR SIZE(mm)	LOADING WEIGHT(kg)
DT-01-25250	All Glass Door Installations	900x2000	<80-100

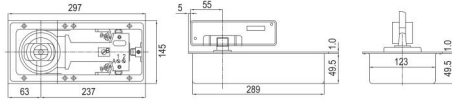


DT-04-26045

MODEL	APPLICATION	DOOR SIZE(mm)	LOADING WEIGHT(kg)
DT-01-25250	All Glass Door Installations	900x2000	90



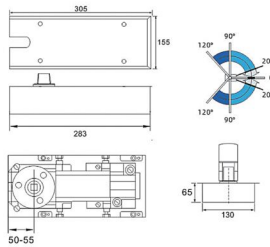
DT-02-28950



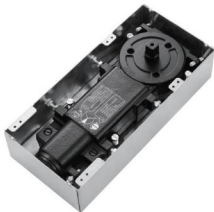
MODEL	APPLICATION	DOOR SIZE(mm)	LOADING WEIGHT(kg)
DT-02-28950	All Glass Door Installations	1000x2200	<100-120



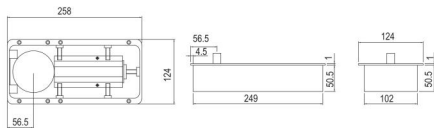
DT-08-28565



MODEL	APPLICATION	DOOR SIZE(mm)	LOADING WEIGHT(kg)
DT-08-28565	All Glass Door Installations	900x2000	<100-150



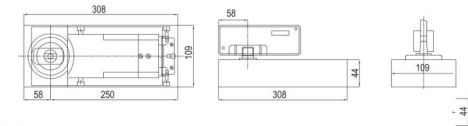
DT-05-26045



MODEL	APPLICATION	DOOR SIZE(mm)	LOADING WEIGHT(kg)
DT-05-26045	All Glass Door Installations	900x2000	<100-120



DT-03-30844

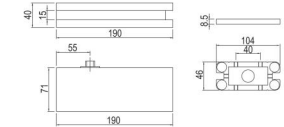


MODEL	APPLICATION	DOOR SIZE(mm)	LOADING WEIGHT(kg)
DT-03-30844	All Glass Door Installations	1100x2500	<100-150



DT-06(免挖式)

Material:SUS304/SUS316 Stainless Steel
Finish:Satin/Polish/PVD

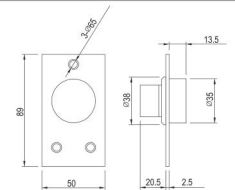


MODEL	APPLICATION	DOOR SIZE(mm)	LOADING WEIGHT(kg)
DT-03-30844	All Glass Door Installations	1100x2500	<80-100



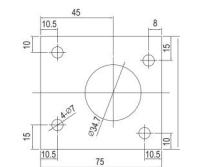
DT-07

Material:SUS304/SUS316 Stainless Steel
Finish:Satin/Polish/PVD



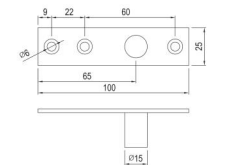
DT-07-8072

Material:SUS304/SUS316 Stainless Steel
Finish:Satin/Polish/PVD



DT-10

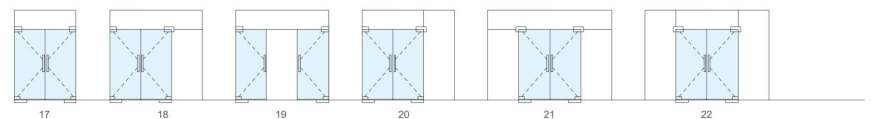
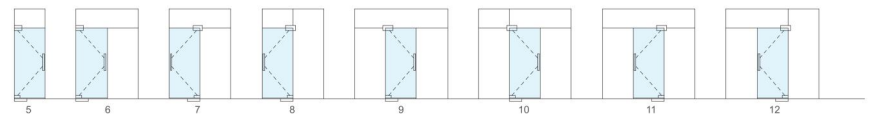
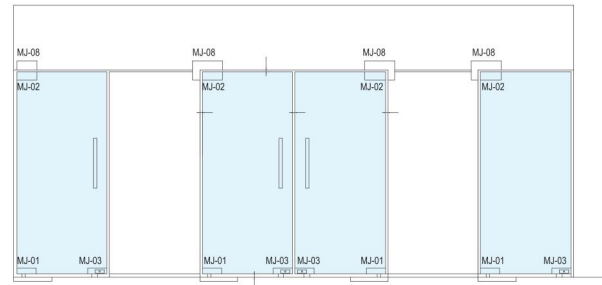
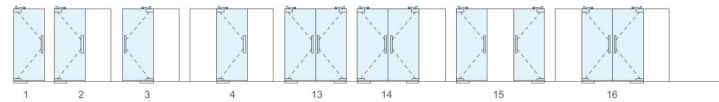
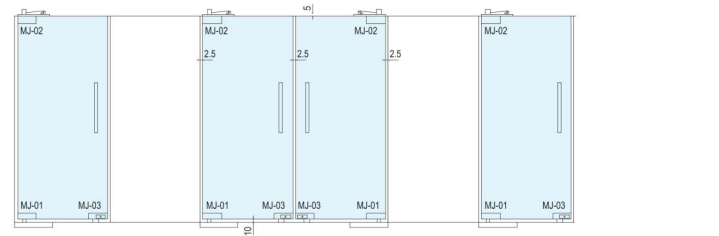
Material:SUS304/SUS316 Stainless Steel
Finish:Satin/Polish/PVD



The European design concept of profound and unique technology, Perfect combination of arts and products.

■ Material: SS304, SS316 ■ Finish: satin finish (S), polish finish(P)

SONLAM

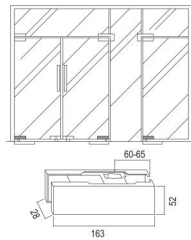


Material: SS304, SS316 ■ Finish: satin finish (S), polish finish(P)



MJ-01-16352

Material:aluminum/zinc alloy/stainless steel 304/316
Suits for frameless tempered glass with thickness of 10-15mm
Used for different kinds of clampsand floor spring
With the finish of mirror, satin, titanium and PVD

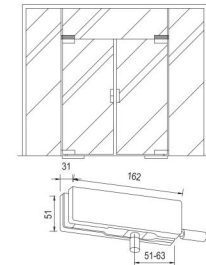


Material: SS304, SS316 ■ Finish: satin finish (S), polish finish(P)



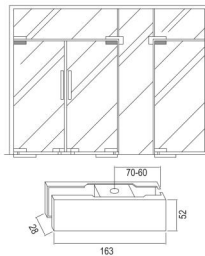
MJ-05-16251

Material:aluminum/zinc alloy/stainless steel 304/316
Suits for frameless tempered glass with thickness of 10-15mm
Used for different kinds of clampsand floor spring
With the finish of mirror, satin, titanium and PVD



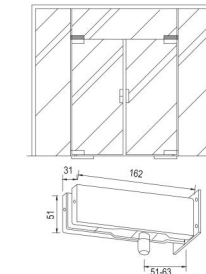
MJ-02-16352

Material:aluminum/zinc alloy/stainless steel 304/316
Suits for frameless tempered glass with thickness of 10-15mm
Used for different kinds of clampsand floor spring
With the finish of mirror, satin, titanium and PVD



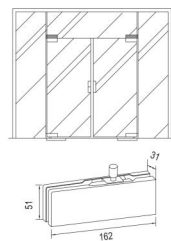
MJ-06-16251

Material:aluminum/zinc alloy/stainless steel 304/316
Suits for frameless tempered glass with thickness of 10-15mm
Used for different kinds of clampsand floor spring
With the finish of mirror, satin, titanium and PVD



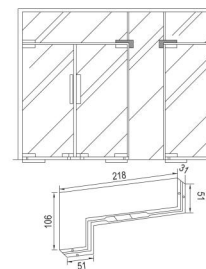
MJ-15-16251

Material:aluminum/zinc alloy/stainless steel 304/316
Suits for frameless tempered glass with thickness of 10-15mm
Used for different kinds of clampsand floor spring
With the finish of mirror, satin, titanium and PVD



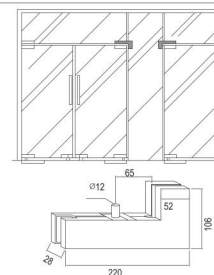
MJ-07-21851

Material:aluminum/zinc alloy/stainless steel 304/316
Suits for frameless tempered glass with thickness of 10-15mm
Used for different kinds of clampsand floor spring
With the finish of mirror, satin, titanium and PVD



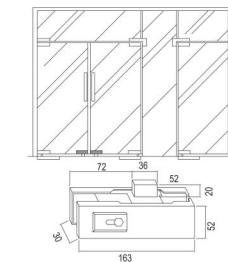
MJ-08-220106

Material:aluminum/zinc alloy/stainless steel 304/316
Suits for frameless tempered glass with thickness of 10-15mm
Used for different kinds of clampsand floor spring
With the finish of mirror, satin, titanium and PVD



MJ-03-16352

Material:aluminum/zinc alloy/stainless steel 304/316
Suits for frameless tempered glass with thickness of 10-15mm
Used for different kinds of clampsand floor spring
With the finish of mirror, satin, titanium and PVD

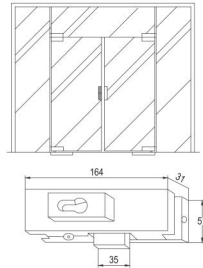


Material: SS304, SS316 ■ Finish: satin finish (S), polish finish(P)



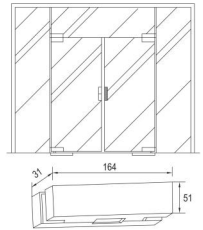
MJ-25-16451

Material:aluminum/zinc alloy/stainless steel 304/316
Suits for frameless tempered glass with thickness of 10-15mm
Used for different kinds of clampsand floor spring
With the finish of mirror, satin, titanium and PVD



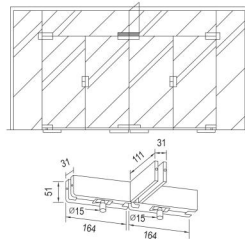
MJ-04-16451

Material:aluminum/zinc alloy/stainless steel 304/316
Suits for frameless tempered glass with thickness of 10-15mm
Used for different kinds of clampsand floor spring
With the finish of mirror, satin, titanium and PVD



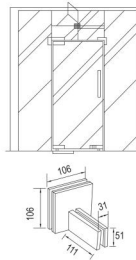
MJ-09-16451

Material:aluminum/zinc alloy/stainless steel 304/316
Suits for frameless tempered glass with thickness of 10-15mm
Used for different kinds of clampsand floor spring
With the finish of mirror, satin, titanium and PVD



MJ-10-10651

Material:aluminum/zinc alloy/stainless steel 304/316
Suits for frameless tempered glass with thickness of 10-15mm
Used for different kinds of clampsand floor spring
With the finish of mirror, satin, titanium and PVD

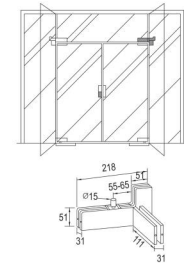


Material: SS304, SS316 ■ Finish: satin finish (S), polish finish(P)



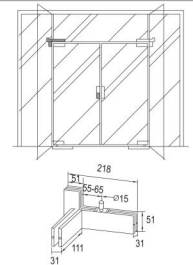
MJ-11-21851

Material:aluminum/zinc alloy/stainless steel 304/316
Suits for frameless tempered glass with thickness of 10-15mm
Used for different kinds of clampsand floor spring
With the finish of mirror, satin, titanium and PVD



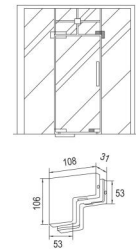
MJ-12-21851

Material:aluminum/zinc alloy/stainless steel 304/316
Suits for frameless tempered glass with thickness of 10-15mm
Used for different kinds of clampsand floor spring
With the finish of mirror, satin, titanium and PVD



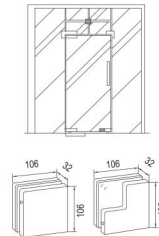
MJ-13-10653

Material:aluminum/zinc alloy/stainless steel 304/316
Suits for frameless tempered glass with thickness of 10-15mm
Used for different kinds of clampsand floor spring
With the finish of mirror, satin, titanium and PVD



MJ-14-10632

Material:aluminum/zinc alloy/stainless steel 304/316
Suits for frameless tempered glass with thickness of 10-15mm
Used for different kinds of clampsand floor spring
With the finish of mirror, satin, titanium and PVD



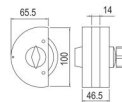
Material: SS304, SS316 ■ Finish: satin finish (S), polish finish(P)



MJ-17k



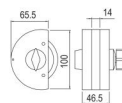
Material: SU304/Zinc Alloy
Suits for frameless tempered glass with thickness of 10-15mm
Used for different kinds of clamps and floor spring
With the finish of mirror, satin, titanium and PVD



MJ-17



Material: SU304/Zinc Alloy
Suits for frameless tempered glass with thickness of 10-15mm
Used for different kinds of clamps and floor spring
With the finish of mirror, satin, titanium and PVD

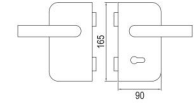


Material: SS304, SS316 ■ Finish: satin finish (S), polish finish(P)

MJ-51K



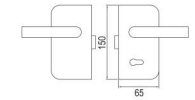
Material: SU304/Zinc Alloy
Suits for frameless tempered glass with thickness of 10-15mm
Used for different kinds of clamps and floor spring
With the finish of mirror, satin, titanium and PVD



MJ-45K



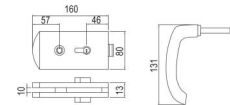
Material: SU304/Zinc Alloy
Suits for frameless tempered glass with thickness of 10-15mm
Used for different kinds of clamps and floor spring
With the finish of mirror, satin, titanium and PVD



MJ-24



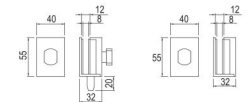
Material: SU304/Zinc Alloy
Suits for frameless tempered glass with thickness of 10-15mm
Used for different kinds of clamps and floor spring
With the finish of mirror, satin, titanium and PVD



MJ-21K



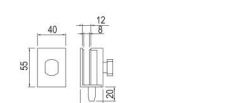
Material: SU304/Zinc Alloy
Suits for frameless tempered glass with thickness of 10-15mm
Used for different kinds of clamps and floor spring
With the finish of mirror, satin, titanium and PVD



MJ-21



Material: SU304/Zinc Alloy
Suits for frameless tempered glass with thickness of 10-15mm
Used for different kinds of clamps and floor spring
With the finish of mirror, satin, titanium and PVD

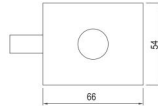


Material: SS304, SS316 ■ Finish: satin finish (S), polish finish(P)



MJ-30

Material:SU304/Zinc Alloy
Suits for frameless tempered glass with thickness of 10-15mm
Used for different kinds of clamps and floor spring
With the finish of mirror, satin, titanium and PVD

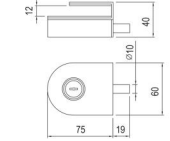


Material: SS304, SS316 ■ Finish: satin finish (S), polish finish(P)



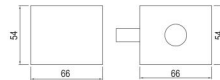
MJ-23

Material:SU304/Zinc Alloy
Suits for frameless tempered glass with thickness of 10-15mm
Used for different kinds of clamps and floor spring
With the finish of mirror, satin, titanium and PVD



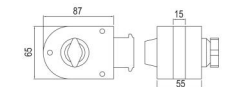
MJ-30K

Material:SU304/Zinc Alloy
Suits for frameless tempered glass with thickness of 10-15mm
Used for different kinds of clamps and floor spring
With the finish of mirror, satin, titanium and PVD



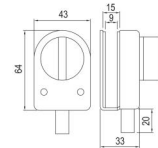
MJ-33

Material:SU304/Zinc Alloy
Suits for frameless tempered glass with thickness of 10-15mm
Used for different kinds of clamps and floor spring
With the finish of mirror, satin, titanium and PVD



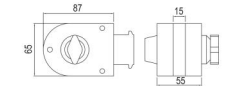
MJ-49-6047

Material:SU304/Zinc Alloy
Suits for frameless tempered glass with thickness of 10-15mm
Used for different kinds of clamps and floor spring
With the finish of mirror, satin, titanium and PVD



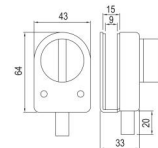
MJ-33K

Material:SU304/Zinc Alloy
Suits for frameless tempered glass with thickness of 10-15mm
Used for different kinds of clamps and floor spring
With the finish of mirror, satin, titanium and PVD



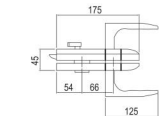
MJ-49-6047K

Material:SU304/Zinc Alloy
Suits for frameless tempered glass with thickness of 10-15mm
Used for different kinds of clamps and floor spring
With the finish of mirror, satin, titanium and PVD



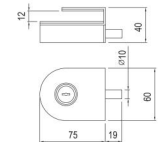
MJ-20

Material:SU304/Zinc Alloy
Suits for frameless tempered glass with thickness of 10-15mm
Used for different kinds of clamps and floor spring
With the finish of mirror, satin, titanium and PVD



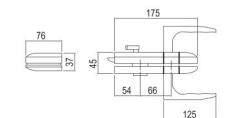
MJ-23K

Material:SU304/Zinc Alloy
Suits for frameless tempered glass with thickness of 10-15mm
Used for different kinds of clamps and floor spring
With the finish of mirror, satin, titanium and PVD



MJ-20K

Material:SU304/Zinc Alloy
Suits for frameless tempered glass with thickness of 10-15mm
Used for different kinds of clamps and floor spring
With the finish of mirror, satin, titanium and PVD



Material: SS304, SS316 ■ Finish: satin finish (S), polish finish(P)



LMS-38

Material:Aluminium
Suits for frameless tempered glass with thickness of 10-15mm
Used for different kinds of clampsand floor spring
With the finish of mirror, satin, titanium and PVD

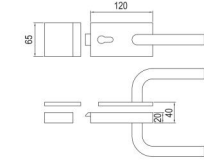


Material: SS304, SS316 ■ Finish: satin finish (S), polish finish(P)



LMJ-32

Material:Aluminium
Suits for frameless tempered glass with thickness of 10-15mm
Used for different kinds of clampsand floor spring
With the finish of mirror, satin, titanium and PVD



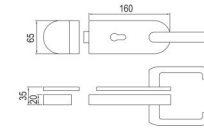
LMS-39

Material:Aluminium
Suits for frameless tempered glass with thickness of 10-15mm
Used for different kinds of clampsand floor spring
With the finish of mirror, satin, titanium and PVD



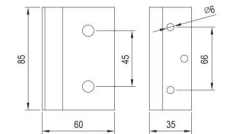
LMJ-36

Material:Aluminium
Suits for frameless tempered glass with thickness of 10-15mm
Used for different kinds of clampsand floor spring
With the finish of mirror, satin, titanium and PVD



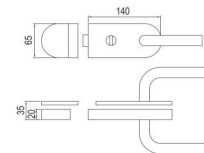
LMS-37

Material:Aluminium
Suits for frameless tempered glass with thickness of 10-15mm
Used for different kinds of clampsand floor spring
With the finish of mirror, satin, titanium and PVD



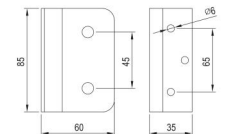
LMJ-31

Material:Aluminium
Suits for frameless tempered glass with thickness of 10-15mm
Used for different kinds of clampsand floor spring
With the finish of mirror, satin, titanium and PVD



LMS-40

Material:Aluminium
Suits for frameless tempered glass with thickness of 10-15mm
Used for different kinds of clampsand floor spring
With the finish of mirror, satin, titanium and PVD

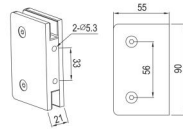


■ Material: SS304, SS316 ■ Finish: satin finish (S), polish finish(P)



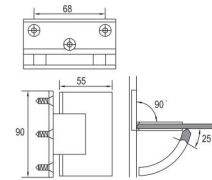
GD-37-9055

Material:SUS304/SUS316/Zinc Alloy
Finish:Satin/Polish/PVD



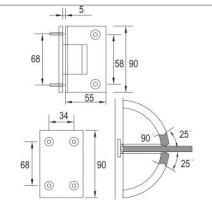
YS-08-9055

Material:SUS304/SUS316/Zinc Alloy
Door thickness:8-12mm
Door width:800-1000mm
Load bearing:50kg
Finish:mirror and satin
Feature when the door is closed to 25° ,
it will closed automatically.



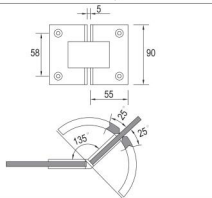
YS-09-9055

Material:SUS304/SUS316/Zinc Alloy
Door thickness:8-12mm
Door width:800-1000mm
Load bearing:50kg
Finish:mirror and satin
Feature when the door is closed to 25° ,
it will closed automatically.



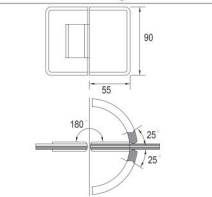
YS-10-9055

Material:SUS304/SUS316/Zinc Alloy
Door thickness:8-12mm
Door width:800-1000mm
Load bearing:50kg
Finish:mirror and satin
Feature when the door is closed to 25° ,
it will closed automatically.



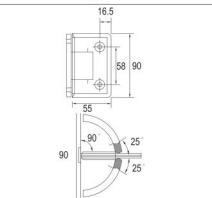
YS-11-9055

Material:SUS304/SUS316/Zinc Alloy
Door thickness:8-12mm
Door width:800-1000mm
Load bearing:50kg
Finish:mirror and satin
Feature when the door is closed to 25° ,
it will closed automatically.



YS-12-9055

Material:SUS304/SUS316/Zinc Alloy
Door thickness:8-12mm
Door width:800-1000mm
Load bearing:50kg
Finish:mirror and satin
Feature when the door is closed to 25° ,
it will closed automatically.

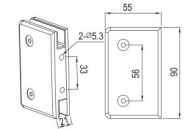


■ Material: SS304, SS316 ■ Finish: satin finish (S), polish finish(P)



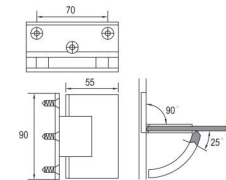
GD-38-9055

Material:SUS304/SUS316/Zinc Alloy
Finish:Satin/Polish/PVD



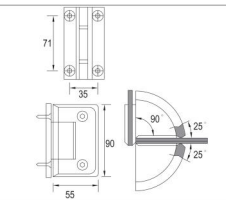
YS-04-9055

Material:SUS304/SUS316/Zinc Alloy
Door thickness:8-12mm
Door width:800-1000mm
Load bearing:50kg
Finish:mirror and satin
Feature when the door is closed to 25° ,
it will closed automatically.



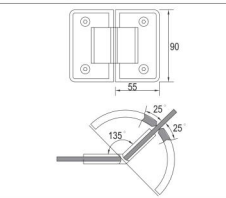
YS-03-9055

Material:SUS304/SUS316/Zinc Alloy
Door thickness:8-12mm
Door width:800-1000mm
Load bearing:50kg
Finish:mirror and satin
Feature when the door is closed to 25° ,
it will closed automatically.



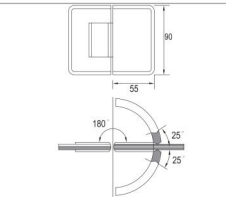
YS-05-9055

Material:SUS304/SUS316/Zinc Alloy
Door thickness:8-12mm
Door width:800-1000mm
Load bearing:50kg
Finish:mirror and satin
Feature when the door is closed to 25° ,
it will closed automatically.



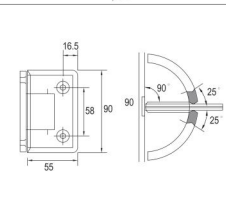
YS-06-9055

Material:SUS304/SUS316/Zinc Alloy
Door thickness:8-12mm
Door width:800-1000mm
Load bearing:50kg
Finish:mirror and satin
Feature when the door is closed to 25° ,
it will closed automatically.



YS-07-9055

Material:SUS304/SUS316/Zinc Alloy
Door thickness:8-12mm
Door width:800-1000mm
Load bearing:50kg
Finish:mirror and satin
Feature when the door is closed to 25° ,
it will closed automatically.

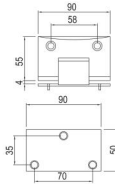


■ Material: SS304, SS316 ■ Finish: satin finish (S), polish finish(P)



YS-28

Material:SUS304/SUS316/Zinc Alloy
Finish:Satin/Polish/PVD

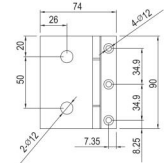


■ Material: SS304, SS316 ■ Finish: satin finish (S), polish finish(P)



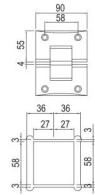
YS-30

Material:SUS304/SUS316/Zinc Alloy
Finish:Satin/Polish/PVD



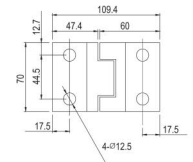
YS-29

Material:SUS304/SUS316/Zinc Alloy
Finish:Satin/Polish/PVD



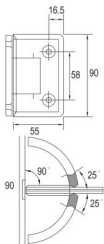
YS-32

Material:SUS304/SUS316/Zinc Alloy
Finish:Satin/Polish/PVD



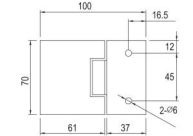
YS-38

Material:SUS304/SUS316/Zinc Alloy
Finish:Satin/Polish/PVD



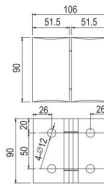
YS-37

Material:SUS304/SUS316/Zinc Alloy
Finish:Satin/Polish/PVD



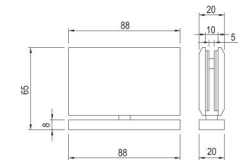
YS-31

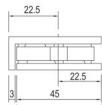
Material:SUS304/SUS316/Zinc Alloy
Finish:Satin/Polish/PVD



YS-23

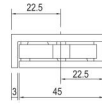
Material:SUS304/SUS316/Zinc Alloy
Finish:Satin/Polish/PVD





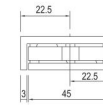
GD-17-4545

Material:SUS304/SUS316/Zinc Alloy
Finish:Satin/Polish/PVD



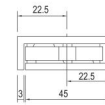
GD-10-4545

Material:SUS304/SUS316/Zinc Alloy
Finish:Satin/Polish/PVD



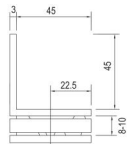
GD-37-4545

Material:SUS304/SUS316/Zinc Alloy
Finish:Satin/Polish/PVD



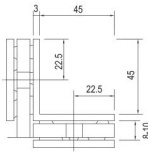
GD-30-4545

Material:SUS304/SUS316/Zinc Alloy
Finish:Satin/Polish/PVD



GD-11-4545

Material:SUS304/SUS316/Zinc Alloy
Finish:Satin/Polish/PVD



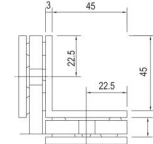
GD-12-4545

Material:SUS304/SUS316/Zinc Alloy
Finish:Satin/Polish/PVD



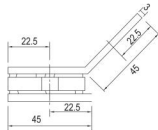
GD-31-4545

Material:SUS304/SUS316/Zinc Alloy
Finish:Satin/Polish/PVD



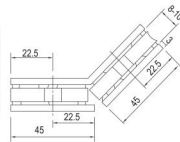
GD-32-4545

Material:SUS304/SUS316/Zinc Alloy
SteelFinish:Satin/Polish/PVD



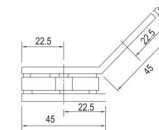
GD-13-4545

Material:SUS304/SUS316/Zinc Alloy
Finish:Satin/Polish/PVD



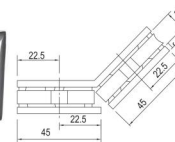
GD-14-4545

Material:SUS304/SUS316/Zinc Alloy
Finish:Satin/Polish/PVD



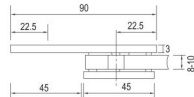
GD-33-4545

Material:SUS304/SUS316/Zinc Alloy
Finish:Satin/Polish/PVD



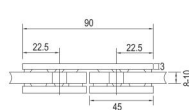
GD-34-4545

Material:SUS304/SUS316/Zinc Alloy
Finish:Satin/Polish/PVD



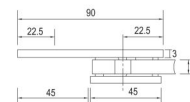
GD-15-4545

Material:SUS304/SUS316/Zinc Alloy
Finish:Satin/Polish/PVD



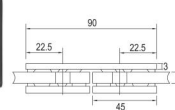
GD-16-4545

Material:SUS304/SUS316/Zinc Alloy
Finish:Satin/Polish/PVD



GD-35-4545

Material:SUS304/SUS316/Zinc Alloy
Finish:Satin/Polish/PVD



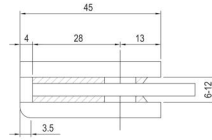
GD-36-4545

Material:SUS304/SUS316/Zinc Alloy
Finish:Satin/Polish/PVD



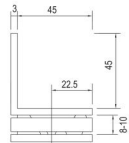
GD-39-4545

Material: SUS304/SUS316/Zinc Alloy
Finish: Satin/Polish/PVD



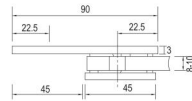
GD-42-4545

Material: SUS304/SUS316/Zinc Alloy
Finish: Satin/Polish/PVD



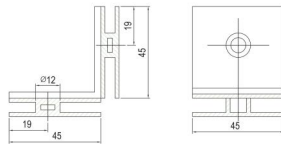
GD-43-4545

Material: SUS304/SUS316/Zinc Alloy
Finish: Satin/Polish/PVD



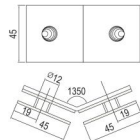
GD-40-4545

Material: SUS304/SUS316/Zinc Alloy
Finish: Satin/Polish/PVD



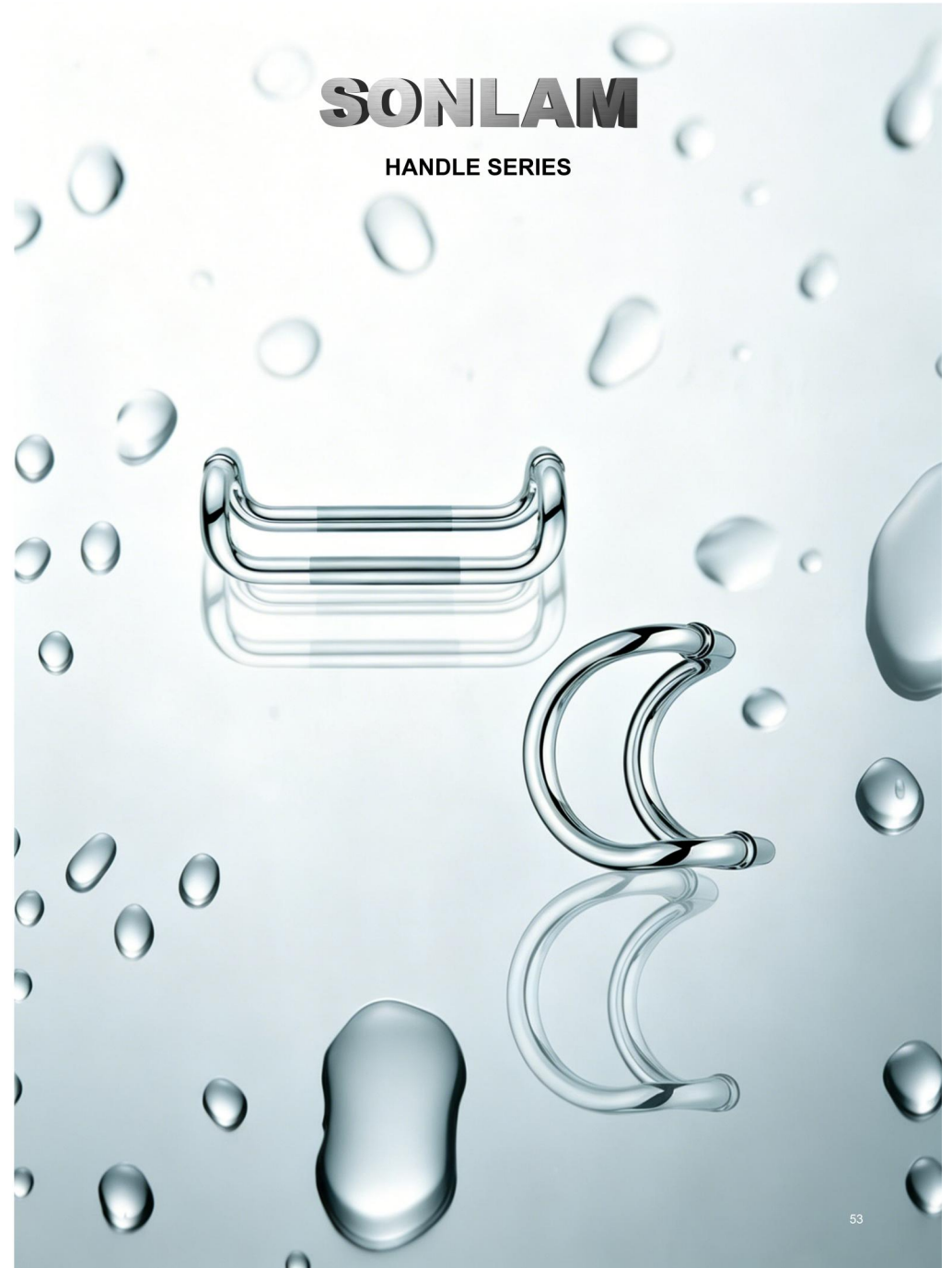
GD-41-4545

Material: SUS304/SUS316/Zinc Alloy
Finish: Satin/Polish/PVD



SONLAM

HANDLE SERIES





LS-01

15x30/350
19x38x500/600/800
25x45x500/600/800



LS-02

32x305/500
32x250x350/600/800



LS-03

Φ25x300
Φ38x600



LS-04

Φ25x300
Φ32x600



LS-211

Φ32x305/450/600/800/1000



LS-10

Φ32x600
Φ32x800
Φ32x1200



LS-77

25x25
25x38



LS-12

Φ25x300
Φ32x500
Φ38x600/800



LS-05

Φ25x300
Φ32x500
Φ38x600



LS-06

Φ38x800



LS-07

Φ32x500
Φ32x600



LS-08

19x38x600
25x45x600



LS-13

Φ32x450



LS-14

Φ32x450



LS-15

Φ25x300



LS-16

Φ25x300
Φ32x500
Φ38x600/800



SJLS-101



SJLS-102



SJLS-103



LS-36



LS-17
38x800



LS-18
Φ25x300
Φ32x600
Φ35x800/1200



LS-19
Φ38x600
Φ38x800



LS-20
Φ25x300
Φ25x450



LS-65
Φ35x1500



LS-21
Φ25x200



LS-22
Φ25x200



LS-23
Φ25x300



LS-24
Φ25x200

■ Material: SS304, SS316 ■ Finish: satin finish (S), polish finish(P)



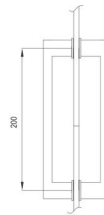
LS-25

Material:SUS304/SUS316 Stainless Steel
Finish:Satin/Polish/PVD



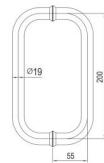
LS-26

Material:SUS304/SUS316 Stainless Steel
Finish:Satin/Polish/PVD



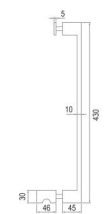
LS-33

Material:SUS304/SUS316 Stainless Steel
Finish:Satin/Polish/PVD



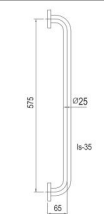
LS-34

Material:SUS304/SUS316 Stainless Steel
Finish:Satin/Polish/PVD



LS-35

Material:SUS304/SUS316 Stainless Steel
Finish:Satin/Polish/PVD

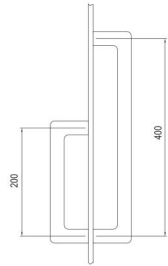


■ Material: SS304, SS316 ■ Finish: satin finish (S), polish finish(P)



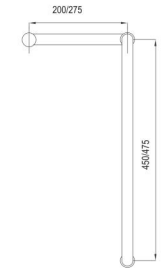
XLS-29

Material:SUS304/SUS316 Stainless Steel
Finish:Satin/Polish/PVD



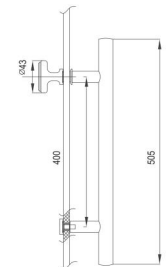
XLS-30

Material:SUS304/SUS316 Stainless Steel
Finish:Satin/Polish/PVD



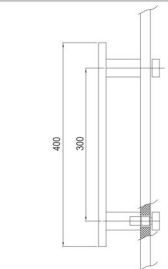
XLS-31

Material:SUS304/SUS316 Stainless Steel
Finish:Satin/Polish/PVD



XLS-32

Material:SUS304/SUS316 Stainless Steel
Finish:Satin/Polish/PVD

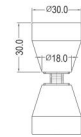


■ Material: SS304, SS316 ■ Finish: satin finish (S), polish finish(P)



XLS-07-3030

Material:SUS304/SUS316 Stainless Steel
Finish:Satin/Polish/PVD

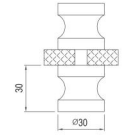


■ Material: SS304, SS316 ■ Finish: satin finish (S), polish finish(P)



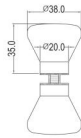
LS-10-3030

Material:SUS304/SUS316 Stainless Steel
Finish:Satin/Polish/PVD



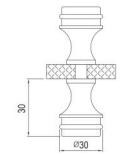
XLS-11-3835

Material:SUS304/SUS316 Stainless Steel
Finish:Satin/Polish/PVD



LS-15-3030

Material:SUS304/SUS316 Stainless Steel
Finish:Satin/Polish/PVD



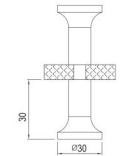
XLS-13-4540

Material:SUS304/SUS316 Stainless Steel
Finish:Satin/Polish/PVD



LS-30-3030

Material:SUS304/SUS316 Stainless Steel
Finish:Satin/Polish/PVD



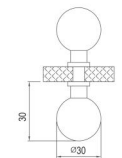
XLS-14-3230

Material:SUS304/SUS316 Stainless Steel
Finish:Satin/Polish/PVD



LS-19-3030

Material:SUS304/SUS316 Stainless Steel
Finish:Satin/Polish/PVD



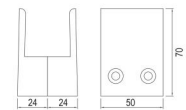
LS-21-3030

Material:SUS304/SUS316 Stainless Steel
Finish:Satin/Polish/PVD



LS-124-4929

Material:SUS304/SUS316 Stainless Steel
Finish:Satin/Polish/PVD

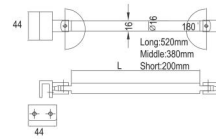


Material: SS304, SS316 ■ Finish: satin finish (S), polish finish(P)



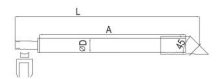
LG-10

Material:SUS304/SUS316 Stainless Steel
Finish:Satin/Polish/PVD



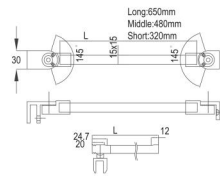
LG-11

Material:SUS304/SUS316 Stainless Steel
Finish:Satin/Polish/PVD



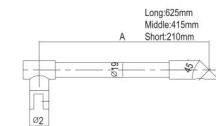
LG-12

Material:SUS304/SUS316 Stainless Steel
Finish:Satin/Polish/PVD



LG-13

Material:SUS304/SUS316 Stainless Steel
Finish:Satin/Polish/PVD

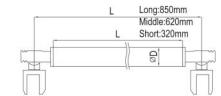


Material: SS304, SS316 ■ Finish: satin finish (S), polish finish(P)



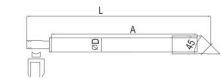
LG-14

Material:SUS304/SUS316 Stainless Steel
Finish:Satin/Polish/PVD



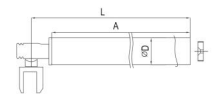
LG-15

Material:SUS304/SUS316 Stainless Steel
Finish:Satin/Polish/PVD



LG-16

Material:SUS304/SUS316 Stainless Steel
Finish:Satin/Polish/PVD

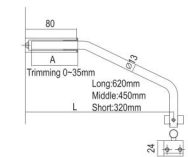


FORMAT	SIZE(mm)			
	A	L	Min. L	Max. L
Ø25x320	320	350	520	25
Ø25x620	620	650	860	25
Ø25x850	850	880	1300	25
FINISH	MIRROR POLISHED/PLATING			



LG-17

Material:SUS304/SUS316 Stainless Steel
Finish:Satin/Polish/PVD

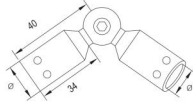


Material: SS304, SS316 ■ Finish: satin finish (S), polish finish(P)



PJ-01

Material:SUS304/SUS316 Stainless Steel
Finish:Satin/Polish/PVD
Matching round pipe:φ19/φ25



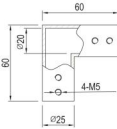
PJ-02

Material:SUS304/SUS316 Stainless Steel
Finish:Satin/Polish/PVD
Matching round pipe:φ19/φ25



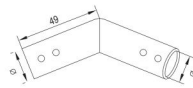
PJ-05

Material:SUS304/SUS316 Stainless Steel
Finish:Satin/Polish/PVD
Matching round pipe:φ19/φ25



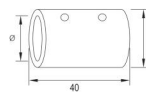
PJ-03

Material:SUS304/SUS316 Stainless Steel
Finish:Satin/Polish/PVD
Matching round pipe:φ19/φ25



PJ-04

Material:SUS304/SUS316 Stainless Steel
Finish:Satin/Polish/PVD
Matching round pipe:φ19/φ25

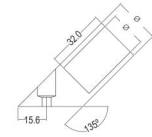


Material: SS304, SS316 ■ Finish: satin finish (S), polish finish(P)



PJ-14

Material:SUS304/SUS316 Stainless Steel
Finish:Satin/Polish/PVD
Matching The Round Pipe:φ19/φ25mm



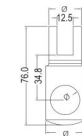
PJ-30

Material:SUS304/SUS316 Stainless Steel
Finish:Satin/Polish/PVD
Matching The Round Pipe:φ19/φ25mm



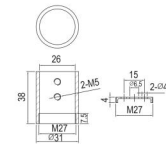
PJ-29

Material:SUS304/SUS316 Stainless Steel
Finish:Satin/Polish/PVD
Matching The Round Pipe:φ19/φ25mm



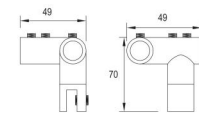
PJ-23

Material:SUS304/SUS316 Stainless Steel
Finish:Satin/Polish/PVD
Matching The Round Pipe:φ19/φ25mm



PJ-07

Material:SUS304/SUS316 Stainless Steel
Finish:Satin/Polish/PVD
Matching The Round Pipe:φ19/φ25mm

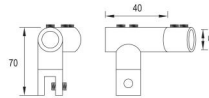


Material: SS304, SS316 ■ Finish: satin finish (S), polish finish(P)



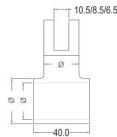
PJ-08

Material:SUS304/SUS316 Stainless Steel
Finish:Satin/Polish/PVD
Matching The Round Pipe:φ19/φ25mm



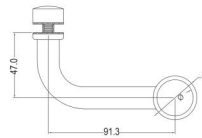
PJ-06

Material:SUS304/SUS316 Stainless Steel
Finish:Satin/Polish/PVD
Matching The Round Pipe:φ19/φ25mm



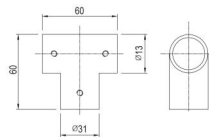
PJ-25

Material:SUS304/SUS316 Stainless Steel
Finish:Satin/Polish/PVD
Matching The Round Pipe:φ19/φ25mm



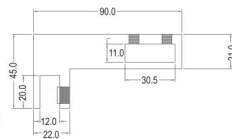
PJ-41

Material:SUS304/SUS316 Stainless Steel
Finish:Satin/Polish/PVD
Matching The Round Pipe:φ19/φ25mm



PJ-26

Material:SUS304/SUS316 Stainless Steel
Finish:Satin/Polish/PVD
Matching The Square Tube:30x10mm/40x15mm

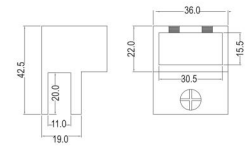


Material: SS304, SS316 ■ Finish: satin finish (S), polish finish(P)



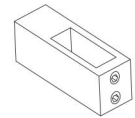
PJ-27

Material:SUS304/SUS316 Stainless Steel
Finish:Satin/Polish/PVD
Matching The Square Tube:30x10mm



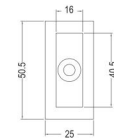
PJ-31

Material:SUS304/SUS316 Stainless Steel
Finish:Satin/Polish/PVD
Matching The Square Tube:30x10mm/40x15mm



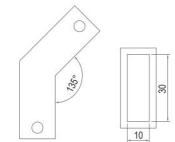
GH-1-4

Material:SUS304/SUS316 Stainless Steel
Finish:Satin/Polish/PVD
Matching The Square Tube:30x10mm/40x15mm



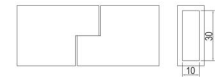
PJ-49

Material:SUS304/SUS316 Stainless Steel
Finish:Satin/Polish/PVD
Matching The Square Tube:30x10mm/40x15mm



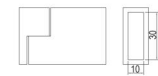
PJ-52

Material:SUS304/SUS316 Stainless Steel
Finish:Satin/Polish/PVD
Matching The Square Tube:30x10mm/40x15mm



PJ-53

Material:SUS304/SUS316 Stainless Steel
Finish:Satin/Polish/PVD
Matching The Square Tube:30x10mm/40x15mm



■ Material: SS304, SS316 ■ Finish: satin finish (S), polish finish(P)



PJ-18

Material:SUS304/SUS316 Stainless Steel
Finish:Satin/Polish/PVD
Matching The Square Tube:30x10mm



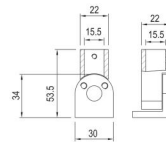
PJ-50

Material:SUS304/SUS316 Stainless Steel
Finish:Satin/Polish/PVD
Matching The Square Tube:30x10mm



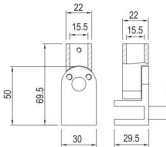
PJ-12

Material:SUS304/SUS316 Stainless Steel
Finish:Satin/Polish/PVD
Matching The Square Tube:15x15mm



PJ-13

Material:SUS304/SUS316 Stainless Steel
Finish:Satin/Polish/PVD
Matching The Square Tube:15x15mm



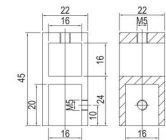
PJ-82

Material:SUS304/SUS316 Stainless Steel
Finish:Satin/Polish/PVD
Matching The Square Tube:15x15mm



ZH-83

Material:SUS304/SUS316 Stainless Steel
Finish:Satin/Polish/PVD
Matching The Square Tube:15x15mm

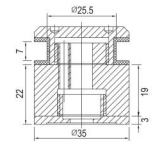


■ Material: SS304, SS316 ■ Finish: satin finish (S), polish finish(P)



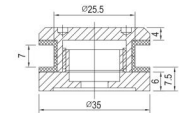
BJ-130

Material:SUS304/SUS316 Stainless Steel
Finish:Satin/Polish



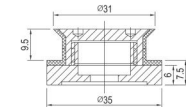
BJ-127

Material:SUS304/SUS316 Stainless Steel
Finish:Satin/Polish



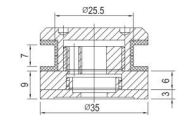
BJ-128

Material:SUS304/SUS316 Stainless Steel
Finish:Satin/Polish



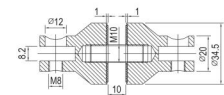
BJ-129

Material:SUS304/SUS316 Stainless Steel
Finish:Satin/Polish



BJ-131

Material:SUS304/SUS316 Stainless Steel
Finish:Satin/Polish

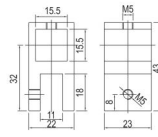


■ Material: SS304, SS316 ■ Finish: satin finish (S), polish finish(P)



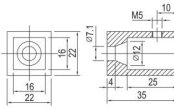
ZH-86

Material:SUS304/SUS316 Stainless Steel
Finish:Satin/Polish/PVD
Matching The Square Tube:15x15mm



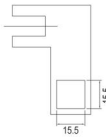
ZH-61

Material:SUS304/SUS316 Stainless Steel
Finish:Satin/Polish/PVD
Matching The Square Tube:15x15mm



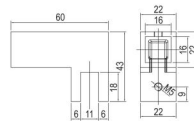
ZH-87

Material:SUS304/SUS316 Stainless Steel
Finish:Satin/Polish/PVD
Matching The Square Tube:15x15mm



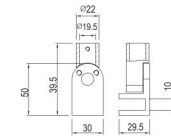
ZH-62

Material:SUS304/SUS316 Stainless Steel
Finish:Satin/Polish/PVD
Matching The Square Tube:15x15mm



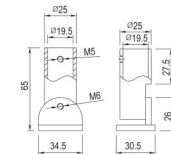
PJ-10

Material:SUS304/SUS316 Stainless Steel
Finish:Satin/Polish/PVD
Matching The Round Pipe:φ19/φ25mm



PJ-11

Material:SUS304/SUS316 Stainless Steel
Finish:Satin/Polish/PVD
Matching The Round Pipe:φ19/φ25mm

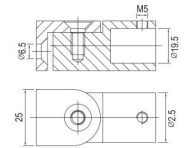


■ Material: SS304, SS316 ■ Finish: satin finish (S), polish finish(P)



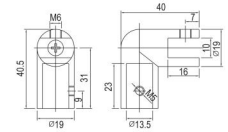
PJ-100

Material:SUS304/SUS316 Stainless Steel
Finish:Satin/Polish/PVD
Matching The Square Tube:φ19/φ25mm



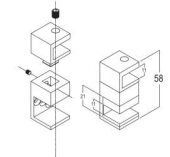
PJ-101

Material:SUS304/SUS316 Stainless Steel
Finish:Satin/Polish/PVD
Matching The Round Pipe:φ19/φ25mm



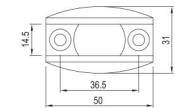
PJ-40

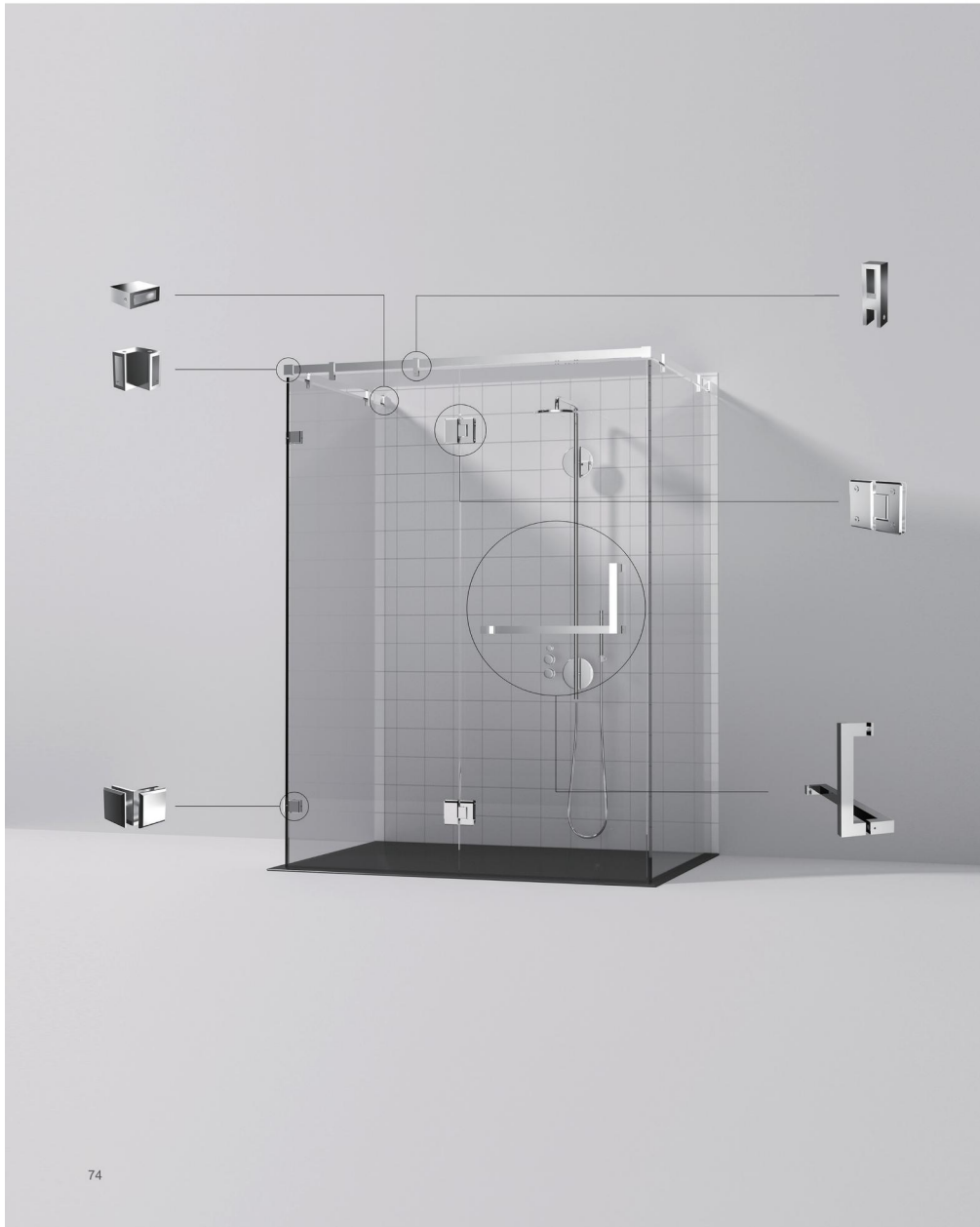
Material:SUS304/SUS316 Stainless Steel
Finish:Satin/Polish/PVD



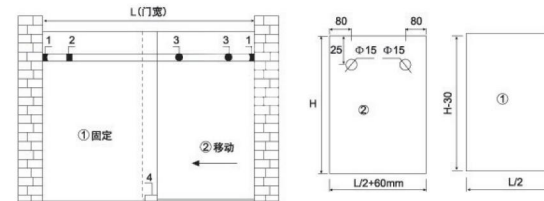
GH-38

Material:SUS304/SUS316 Stainless Steel
Finish:Satin/Polish/PVD



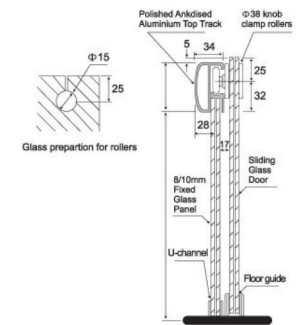


标准配置 Standard Application



- 1. 管座 2. 防撞胶 3. 滑轮
- 4. 止摆器
- 1.Pipe bracket 2.Anti-collision glue
- 3.Sliding roller 4.Floor guide

玻璃厚度: 8-10mm
Glass Thickness: 8-10mm
移门宽度: <1500mm
Glass Door Width: 8-10mm
最大承重: <65kg
Max.Load: 8-10mm



Rectangular sliding door: YM-07



YM-07-1-2

YM-07-2-2

YM-07-3-2

YM-07-4-2



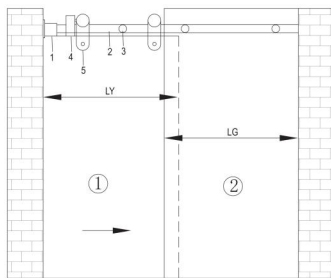
YM-07-5-1

YM-07-6-1

YM-07-1 3010

30X10方管平面安装图

Plane Installation Diagram (30x10mm Square Tube)

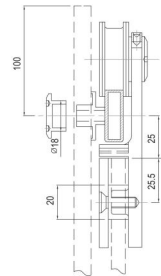
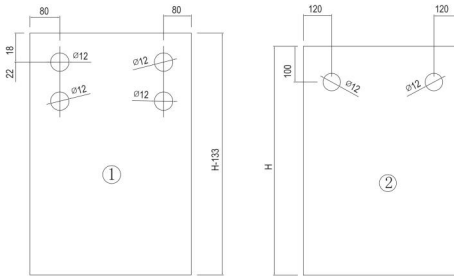


- 1.管套
- 2.φ30x10管导轨
- 3.管夹
- 4.定位器
- 5.正心轮

- 1.Tube Base
- 2.30x10mm Tube Guide Rail
- 3.Tube Clamp
- 4.Clamper
- 5.Centric Wheel

30X10方管截面安装图

Section Installation Diagram (30x10mm Square Tube)



Rectangular sliding door: YM05



YM-05-1-4

YM-05-2-2

YM-05-3-2

YM-05-4-2

YM-05-5-1



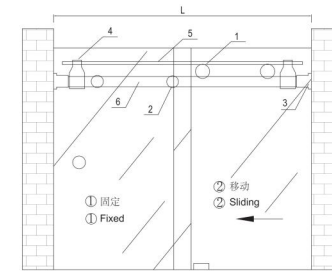
YM-05-6-1

YM-05-7-1 φ25

YM-05-8-1 φ8

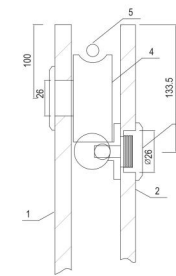
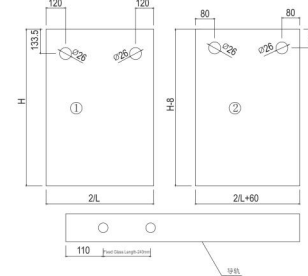
φ25管浴室吊轮平面安装图

Installation of φ25 pipe bathroom hanging wheel



- 1.偏心轮
- 2.管夹
- 3.管套
- 4.定位器
- 5.防跳杆
- 6.φ25管导轨

- 1.Eccentric Wheel
- 2.Tube Clamp
- 3.Tube Base
- 4.Clamper
- 5.Anti-skip Pole
- 6.φ25mm Tube Guide Rail



- 1.活动玻璃
- 2.固定玻璃
- 3.管头
- 4.偏心轮
- 5.φ8防跳杆

- 1.Moveable Glass
- 2.Fixed Glass
- 3.Tube End Cap
- 4.Eccentric Wheel
- 5.8mm Anti-skip Poie

Rectangular sliding door: YM-04



YM-04-1-2

YM-04-2-2

YM-04-3-2

YM-04-4-2

YM-04-5-2



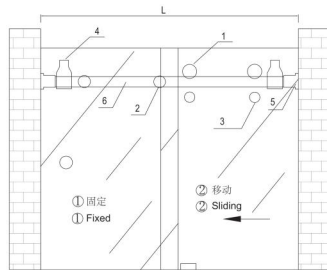
YM-04-6-1

YM-04-7-1

YM-04-8-1 ϕ 25

Ø25管浴室吊轮平面安装图

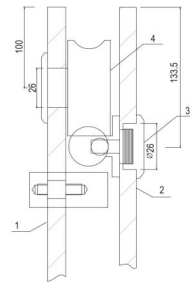
Installation of Ø25 pipe bathroom hanging wheel



- 1.偏心轮
- 2.管夹
- 3.防跳钉
- 4.定位器
- 5.管套
- 6.Ø25管导轨

Ø25管浴室吊轮截面安装图

Section installation of Ø25 pipe bathroom hanging wheel



- 1.活动玻璃
- 2.固定玻璃
- 3.管头
- 4.偏心轮

- 1.Moveable Glass
- 2.Fixed Glass
- 3.Tube End Cap
- 4.Eccentric Wheel



Rectangular sliding door: YM-08



YM-08-1-2

YM-08-2-2

YM-08-3-2

YM-08-4-2

YM-08-5-1



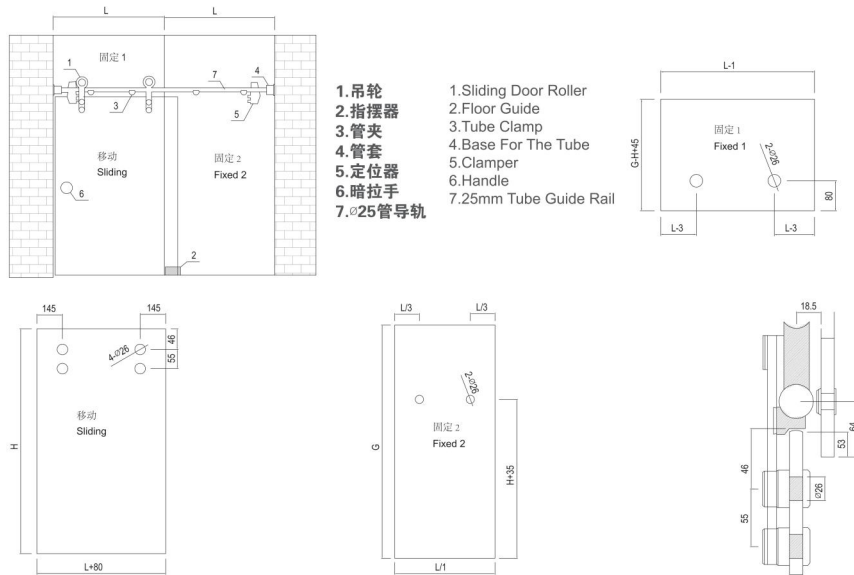
YM-08-6-1

YM-08-7-1

YM-08-8-1 ϕ 25

Ø25管平面安装图

Plane Installation Diagram(ϕ 25mm Pipe)



Rectangular sliding door: YM-03



YM-03-6-1

YM-03-1-2

YM-03-2-2

YM-03-7-1

YM-03-3-2



YM-03-4-2

YM-03-5-2



YM-03-8-1

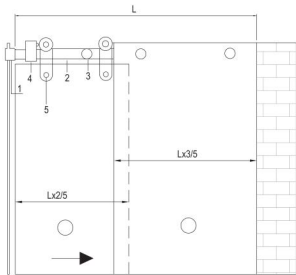


YM-03-9-1 4015



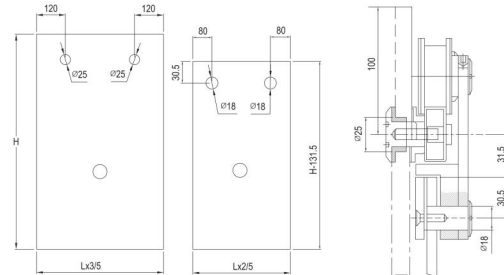
40X15方管平面安装图

Plane Installation Diagram (40x15mm Square Tube)



40X15方管截面安装图

40X15 Sectionl Installation Diagram(40x15mm Square Tube)



- 1.管套
- 2.∅40 × 15管导轨
- 3.管夹
- 4.定位器
- 5.正心轮

- 1.base for the tube
- 2.40x15mm tube guide rail
- 3.tube clamp
- 4.clamper
- 5.centric wheel

Rectangular sliding door: YM-09



YM-09-1-2

YM-09-2-2

YM-09-3-2

YM-09-4-2



YM-09-5-1

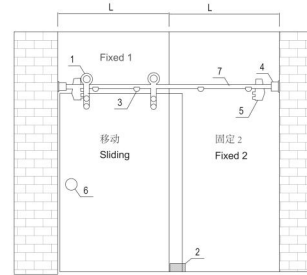


YM-09-6-1 φ 25



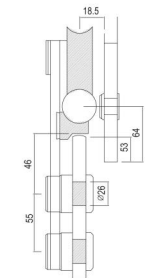
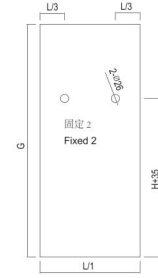
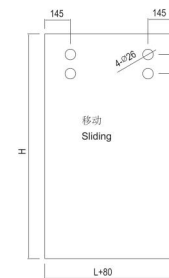
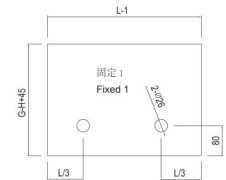
∅25管平面安装图

Plane Installation Diagram (∅25mm Pipe)



- 1.吊轮
- 2.指摆器
- 3.管夹
- 4.管套
- 5.定位器
- 6.暗拉手
- 7.∅25管导轨

- 1.Sliding Door Roller
- 2.Floor Guide
- 3.Tube Clamp
- 4.Base For The Tubel
- 5.Clamper
- 6.Handle
- 7.25mm Tube Guide Rail

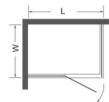




LYF-01

Rectangle single door

Glass Thickness	Regular size	Available size of customization		
		W	L	H
8/10mm	900x1200x1900mm	800~1200mm	1000~1800mm	1900~2100mm



A		PJ-22-8392 Material:SUS304/SUS316 Stainless Steel Finish:Satin/Polish/PVD	
B		PJ-25 Material:SUS304/SUS316 Stainless Steel Finish:Satin/Polish/PVD	
C		YS-11-9055 Material:SUS304/SUS316 Stainless Steel Finish:Satin/Polish/PVD	
D		GD-43 Material:SUS304/SUS316 Stainless Steel Finish:Satin/Polish/PVD	
E		G-01 Material:SUS304/SUS316 Stainless Steel Finish:Satin/Polish/PVD	
F		PJ-32 Material:Plastic Finish:PVD	
G		PJ-33 Material:Plastic Finish:PVD	
H		LS-30 Material:Plastic Finish:PVD	

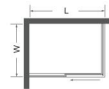
Material: SS304, SS316 ■ Finish: satin finish (S), polish finish(P)




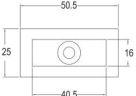


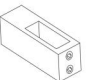




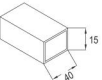



LYF-02

Rectangular sliding door

Glass Thickness	Regular size	Available size of customization		
		W	L	H
8/10mm	900x1200x1900mm	800~1200mm	1000~1800mm	1900~2100mm



Material: SS304, SS316 ■ Finish: satin finish (S), polish finish(P)

A		GH-1-4 Material:SUS304/SUS316 Stainless Steel Finish:Satin/Polish/PVD	
B		GH-68 Material:SUS304/SUS316 Stainless Steel Finish:Satin/Polish/PVD	
C		PJ-31 Material:SUS304/SUS316 Stainless Steel Finish:Satin/Polish/PVD	
D		GH-28 Material:SUS304/SUS316 Stainless Steel Finish:Satin/Polish/PVD	
E		GH-38 Material:SUS304/SUS316 Stainless Steel Finish:Satin/Polish/PVD	
F		GH-25 Install tool	
G		G-02 Material:SUS304/SUS316 Stainless Steel Finish:Satin/Polish/PVD	
H		PJ-32 Material:Plastic Finish:PVD	
I		PJ-33 Material:Plastic Finish:PVD	
J		LS-47 Material:Plastic Finish:PVD	



LYF-03
Rectangular sliding door

Glass Thickness	Regular size	Available size of customization		
		W	L	H
8/10mm	900x1200x1900mm	800-1200mm	1000-1800mm	1900-2100mm



A		GH-13-100 Material:SUS304/SUS316 Stainless Steel Finish:Satin/Polish/PVD	
B		GH-28 Material:SUS304/SUS316 Stainless Steel Finish:Satin/Polish/PVD	
C		GD-12-4545 Material:SUS304/SUS316 Stainless Steel Finish:Satin/Polish/PVD	
D		GD-43 Material:SUS304/SUS316 Stainless Steel Finish:Satin/Polish/PVD	
E		GH-39 Material:SUS304/SUS316 Stainless Steel Finish:Satin/Polish/PVD	
F		LS-31 Material:SUS304/SUS316 Stainless Steel Finish:Satin/Polish/PVD	
G		GH-38 Material:SUS304/SUS316 Stainless Steel Finish:Satin/Polish/PVD	
H		GH-25 Install tool	
I		G-01 Material:SUS304/SUS316 Stainless Steel Finish:Satin/Polish/PVD	
J		GH-14 Material:SUS304/SUS316 Stainless Steel Finish:Satin/Polish/PVD	
K		PJ-32 Material:Plastic Finish:PVD	
L		PJ-33 Material:Plastic Finish:PVD	

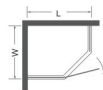
■ Material: SS304, SS316 ■ Finish: satin finish (S), polish finish(P)



LYF-04

Diamond single door

Glass Thickness	Regular size	Available size of customization		
		W	L	H
8/10mm	900x900x1900mm	900~1500mm	900~1500mm	1900~2100mm

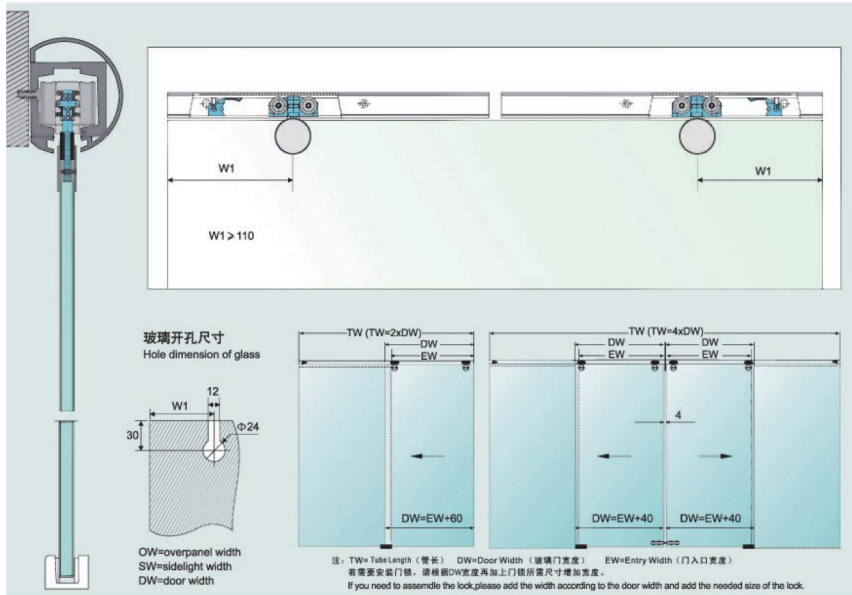


■ Material: SS304, SS316 ■ Finish: satin finish (S), polish finish(P)

A		YS-05-9055 Material:SUS304/SUS316 Stainless Steel Finish:Satin/Polish/PVD	
B		GD-43 Material:SUS304/SUS316 Stainless Steel Finish:Satin/Polish/PVD	
C		PJ-30 Material:SUS304/SUS316 Stainless Steel Finish:Satin/Polish/PVD	
D		PJ-34 Material:SUS304/SUS316 Stainless Steel Finish:Satin/Polish/PVD	
E		PJ-32 Material:Plastic Finish:PVD	
F		PJ-33 Material:Plastic Finish:PVD	
G		LS-48 Material:Plastic Finish:PVD	



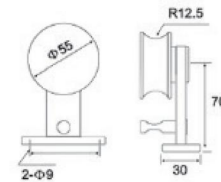
标准配置 Standard Application

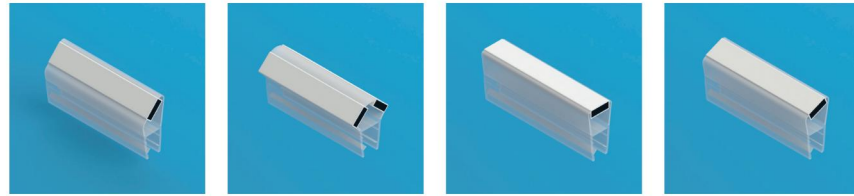


标准配置 Standard Application



木移门吊轮
材质: 优质SS304
表面处理: 砂光/镜光
适合木门厚度: 35-50mm
适用: Φ25管
Wooden door lifting wheel
Material: high quality SS304
Surface treatment: Sanding/mirror light
Suitable for wood door thickness: 35-50mm
Apply to: Φ25 tube



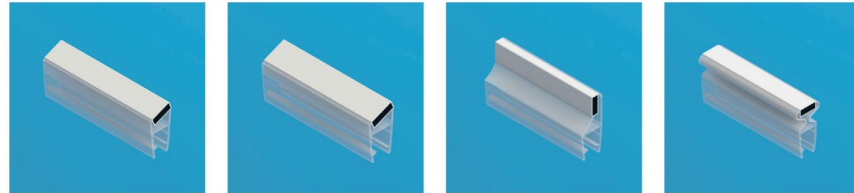


JT-01

JT-02

JT-03

JT-04

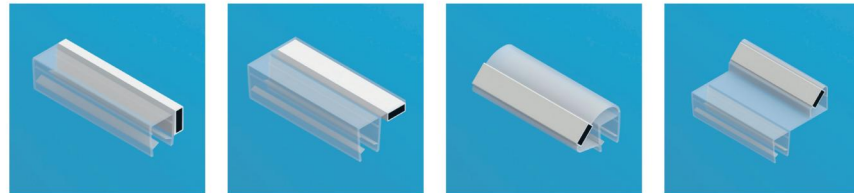


JT-05

JT-06

JT-07

JT-08

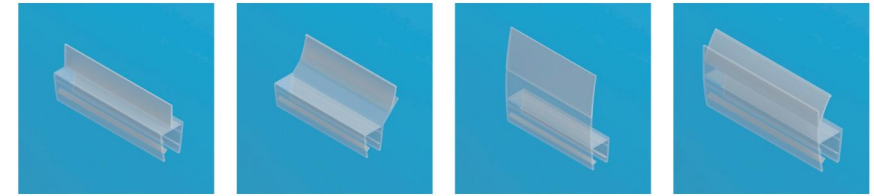
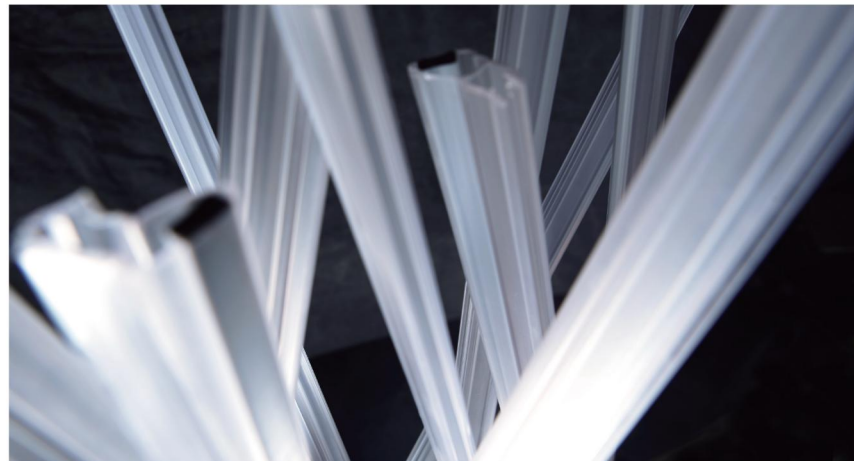


JT-09

JT-10

JT-11

JT-12

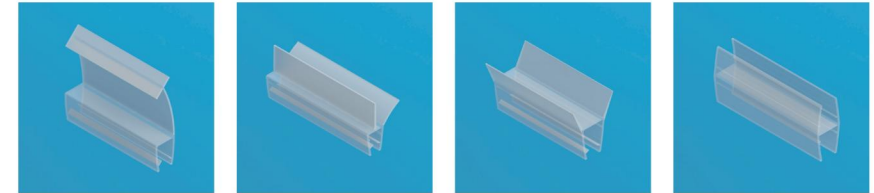


JT-13

JT-14

JT-15

JT-16

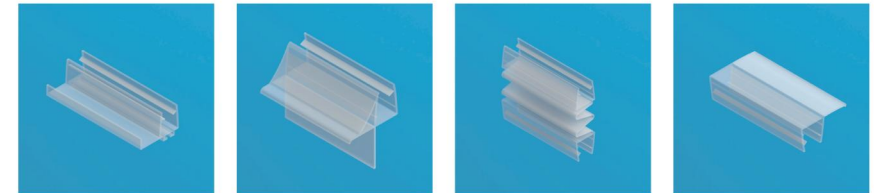


JT-17

JT-18

JT-19

JT-20

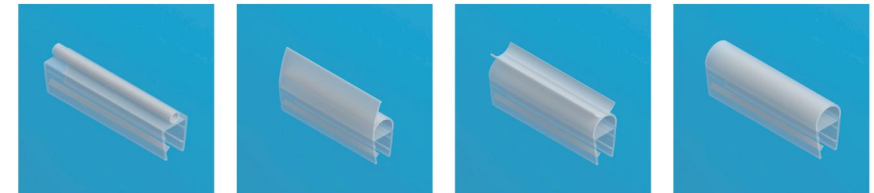


JT-21

JT-22

JT-23

JT-24

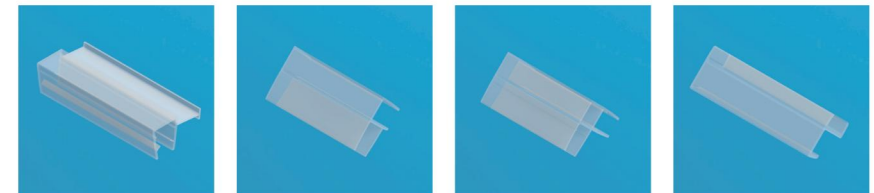


JT-25

JT-26

JT-27

JT-28



JT-29

JT-30

JT-31

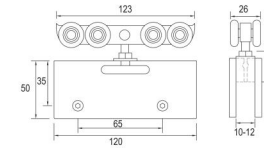
JT-32



Material: SS304, SS316 ■ Finish: satin finish (S), polish finish(P)

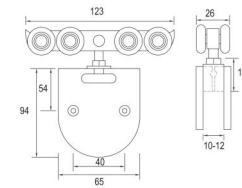
DL-01-12050

Clamp material:stainless steel
 Finish:stainless steel lined
 Door thickness:10mm-12mm
 Load bearing:8wheels-100kg,4wheels-90kg
 Packaging:skinpacking,box,20pcs/ctn.



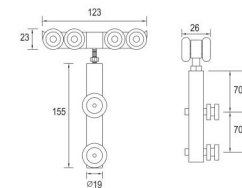
DL-02-6594

Clamp material:stainless steel
 Finish:stainless steel lined
 Door thickness:10mm-12mm
 Load bearing:8wheels-100kg,4wheels-90kg
 Packaging:skinpacking,box,20pcs/ctn.



DL-03-19155

Clamp material:stainless steel
 Finish:stainless steel lined
 Door thickness:10mm-12mm
 Load bearing:8wheels-100kg,4wheels-90kg
 Packaging:skinpacking,box,20pcs/ctn.

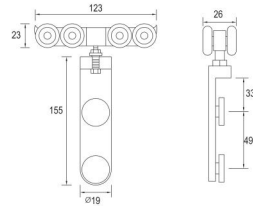


Material: SS304, SS316 ■ Finish: satin finish (S), polish finish(P)

DL-04-19155



Clamp material:stainless steel
Finish:stainless steel lined
Door thickness:10mm-12mm
Load bearing:8wheels-100kg,4wheels-90kg
Packaging:skinpacking,box,20pcs/ctn.

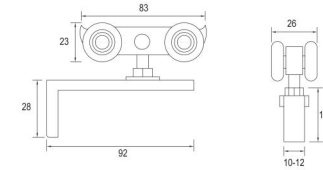


Material: SS304, SS316 ■ Finish: satin finish (S), polish finish(P)

DL-05-25035



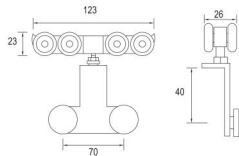
Clamp material:stainless steel
Finish:stainless steel lined
Door thickness:10mm-12mm
Load bearing:8wheels-100kg,4wheels-90kg
Packaging:skinpacking,box,20pcs/ctn.



DL-05-7040



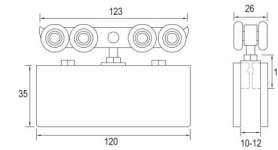
Clamp material:stainless steel
Finish:stainless steel lined
Door thickness:10mm-12mm
Load bearing:8wheels-100kg,4wheels-90kg
Packaging:skinpacking,box,20pcs/ctn.



DL-07-12035



Clamp material:stainless steel
Finish:stainless steel lined
Door thickness:10mm-12mm
Load bearing:8wheels-100kg,4wheels-90kg
Packaging:skinpacking,box,20pcs/ctn.



DL-08



Clamp material:stainless steel
Finish:stainless steel lined
Door thickness:10mm-12mm
Load bearing:8wheels-100kg,4wheels-90kg
Packaging:skinpacking,box,20pcs/ctn.

